

CONTRACT 46

H.B. Lue

Legal Description:
NWSE

Section 15
Township 10 South
Range 17 East

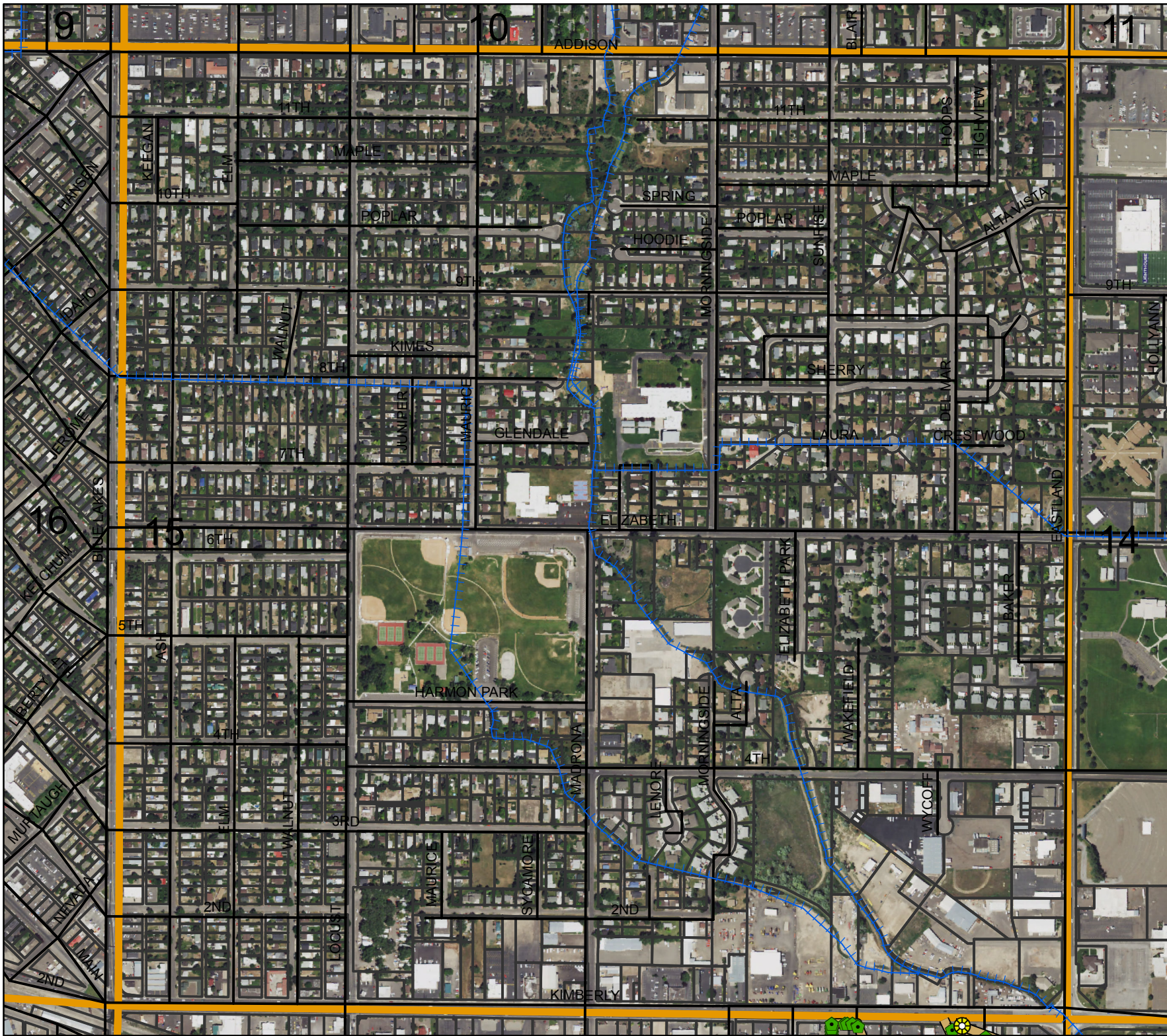
Legend

- Man Holes
- Observation Wells
- Tunnel Portals
- Vertical Shafts
- Wells
- Drains
- Tunnels
- City Limits
- Canals
- Roads
- Section Line
- Parcels



This map is for informational and reference purposes only and may not have been prepared for, or be suitable for legal, engineering, or surveying purposes. Users of this information should review or consult the primary data, and information sources to ascertain the usability of information.

Created: 8/2016



46
AGREEMENT

WELL DRAINAGE

TWIN FALLS CANAL COMPANY,

Party of the First Part.

H. B. Lue

Party of the Second Part.

Sec. *15* Tp. *10* R. *17*

11/30

191*5*

Contract # 46

H.B. Jew.

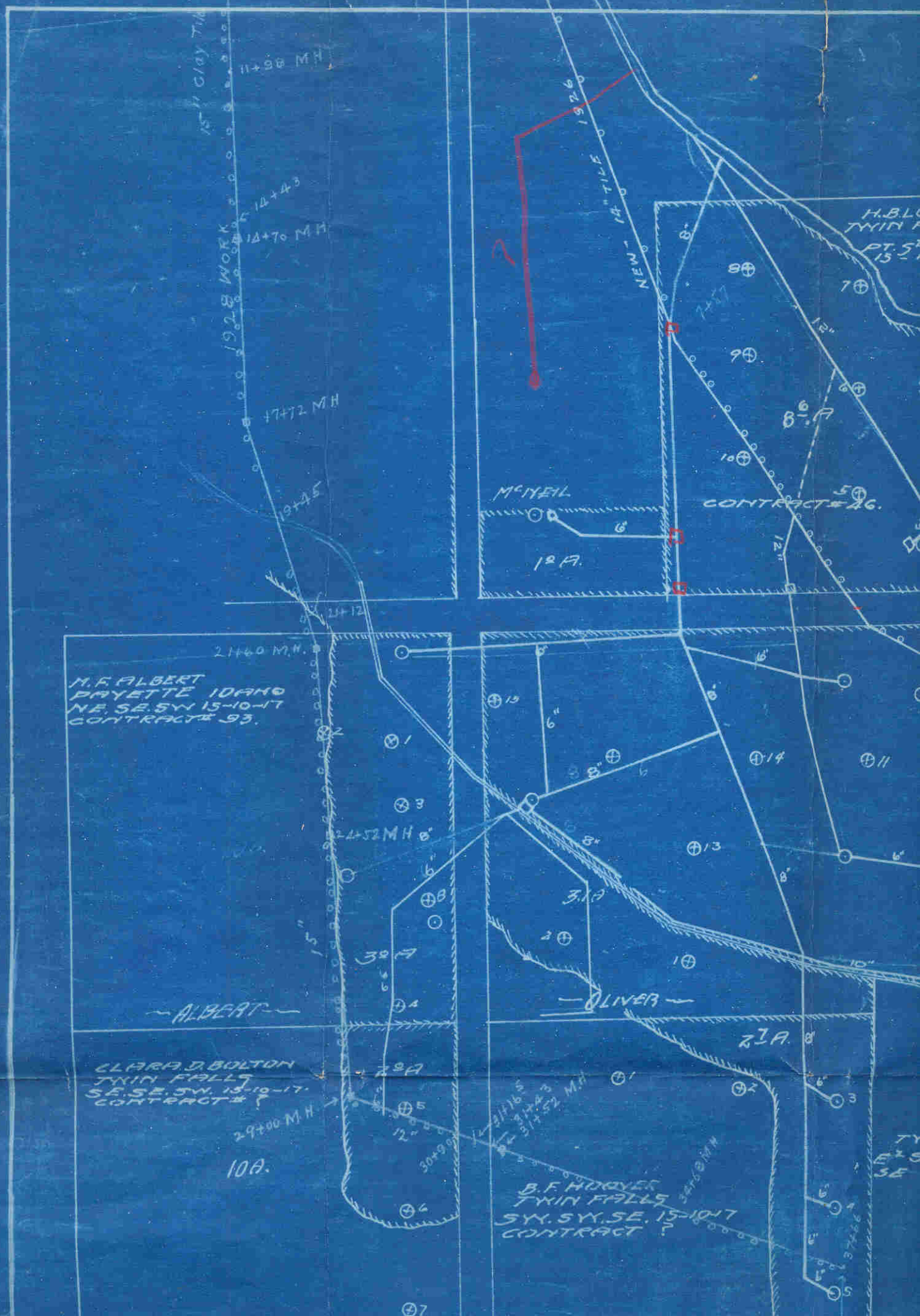
Two Falls, Idaho.

Part No. 16 15-10-17.

See sketch for work done. See remarks on
contract # 33 - Conditions are similar -
work has helped but not to the extent
desired.

May 27 - 1918

O. J. Farrow



15" City Tilt
 1928 WORK
 11+98 M.H.
 14+43
 14+70 M.H.
 17+72 M.H.
 18+45



M'NEIL
 12 A.
 CONTRACT # 26.
 50
 12"

M.F. ALBERT
 PRYETTE IDAHO
 NE. SE. SW. 15-10-17
 CONTRACT # 93.

CLARA D. BOLTON
 TWIN FALLS
 SE. SE. SW. 15-10-17
 CONTRACT # ?

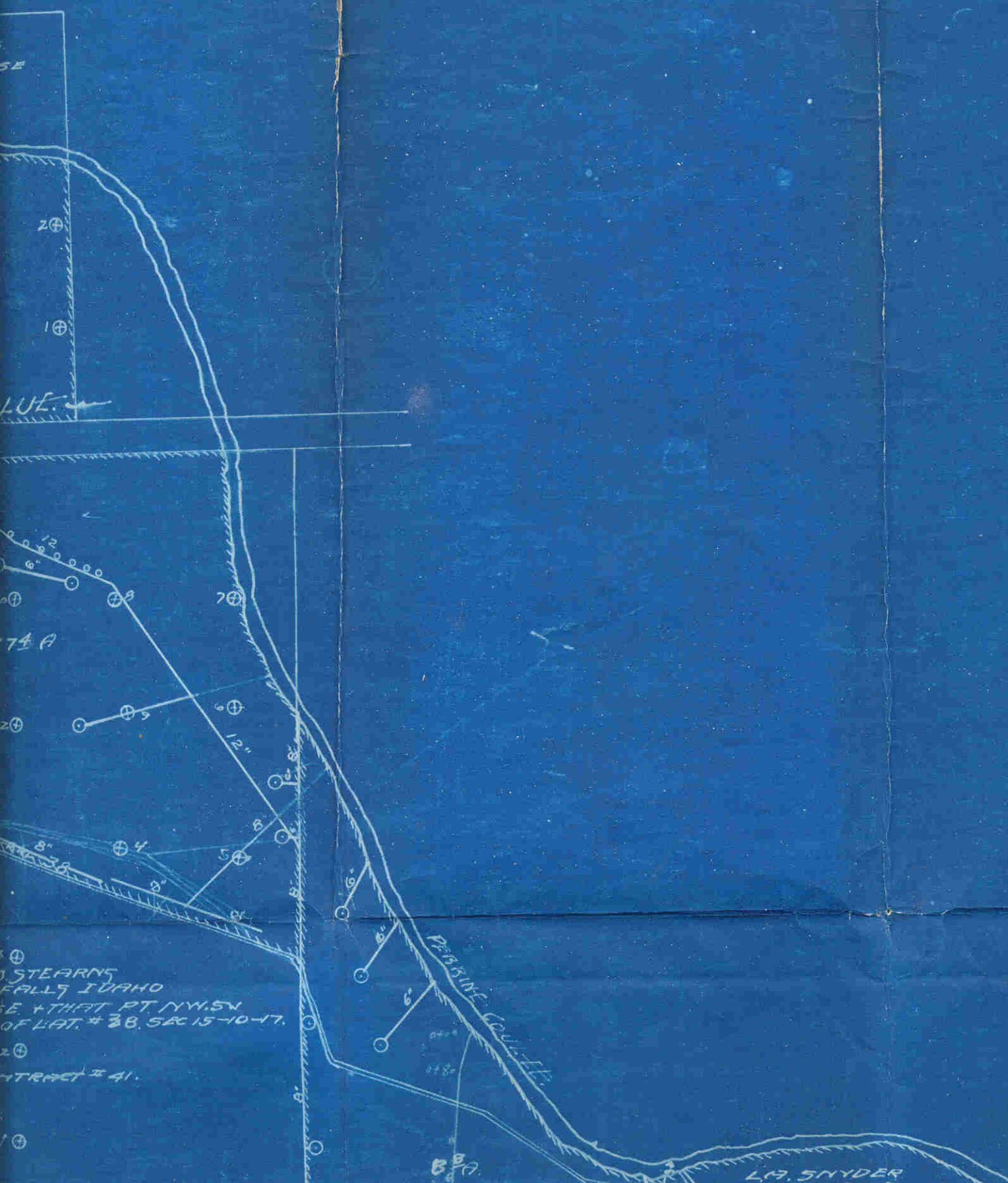
B.F. HOOVER
 TWIN FALLS
 SW. SW. SE. 15-10-17
 CONTRACT # ?

ALBERT

OLIVER

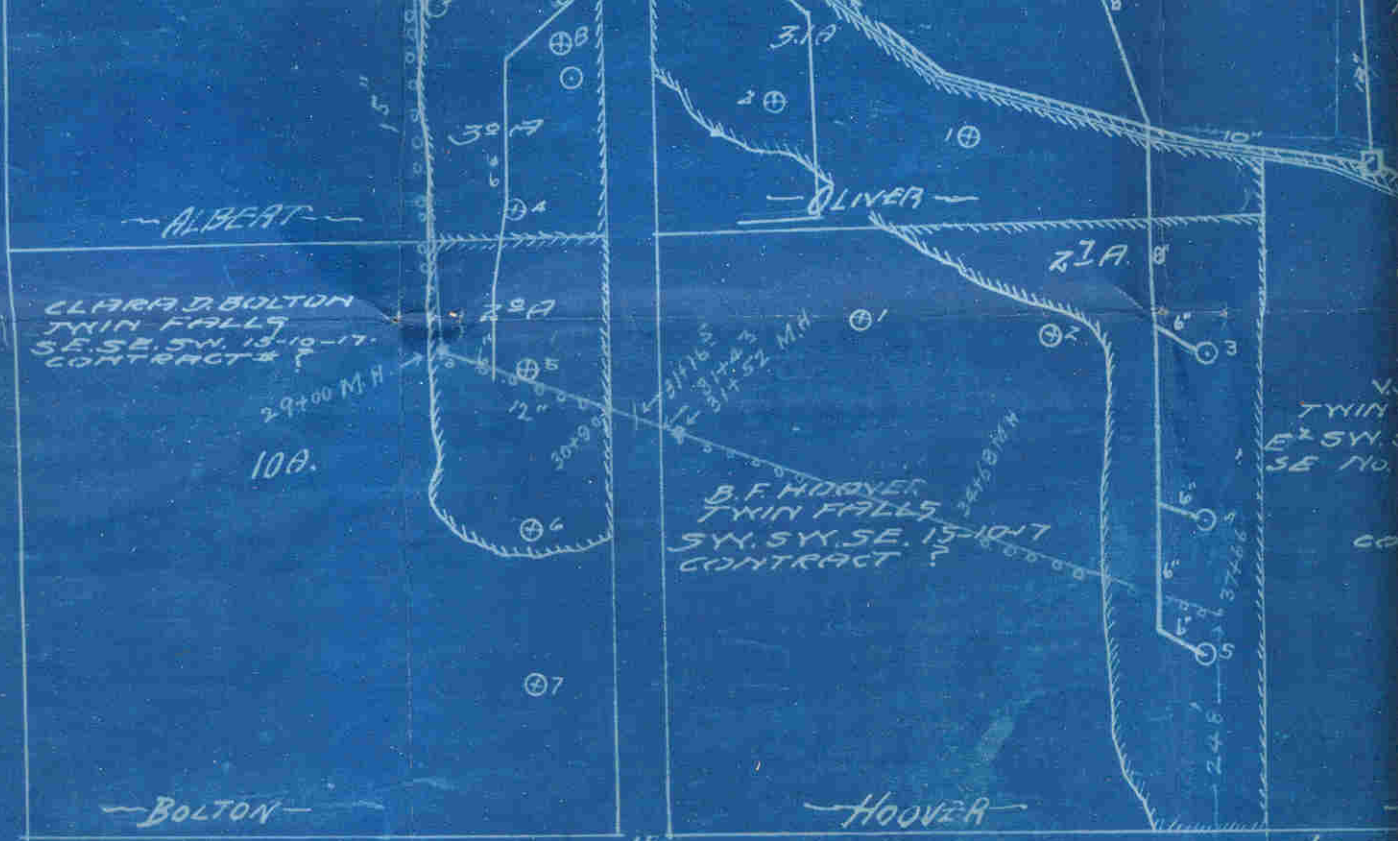
10A.

21A.



STEARN'S
 FALLS IDAHO
 E. THAT PT. NW. 5V
 OF LAT. # 38. SEC 15-10-17.
 CONTRACT # 41.

L.A. SNYDER



15
22 T-10-5-A-17-E.

LAND DRAINAGE

TWIN FALLS CANAL COMPANY

SEASON

1915 ^{and} 1916

- WELLS.
 - ⊗ TEST PITS.
 - DRAINS.
 - CELLARS.
- Scale - 1" = 200'

CONTRACT # 41.

10

248
3748

L.A. SNYDER
TWIN FALLS,
SE. SE. 13-10-17.
CONTRACT # ?

— STEARNS —

— SNYDER —

KIMBERLY-ROAD

15 14
22 23

— SMITH —

JAYE SMITH
TWIN FALLS
PT. NW, NE 28-10-17.
CONTRACT # 40.

— CRAYFORD —

L.A. CRAYFORD
TWIN FALLS
PT. NE, NE 22-10-17

CONTRACT # 33.

19.A

OPEN DITCH

13

48.A

17

19

17

19

2

20

17

10

15

16

18

20

1

30

14

11

14

22

21

40

15

12

13

23

24

25

O.S.L. AT-D-WAY

6'

4 B