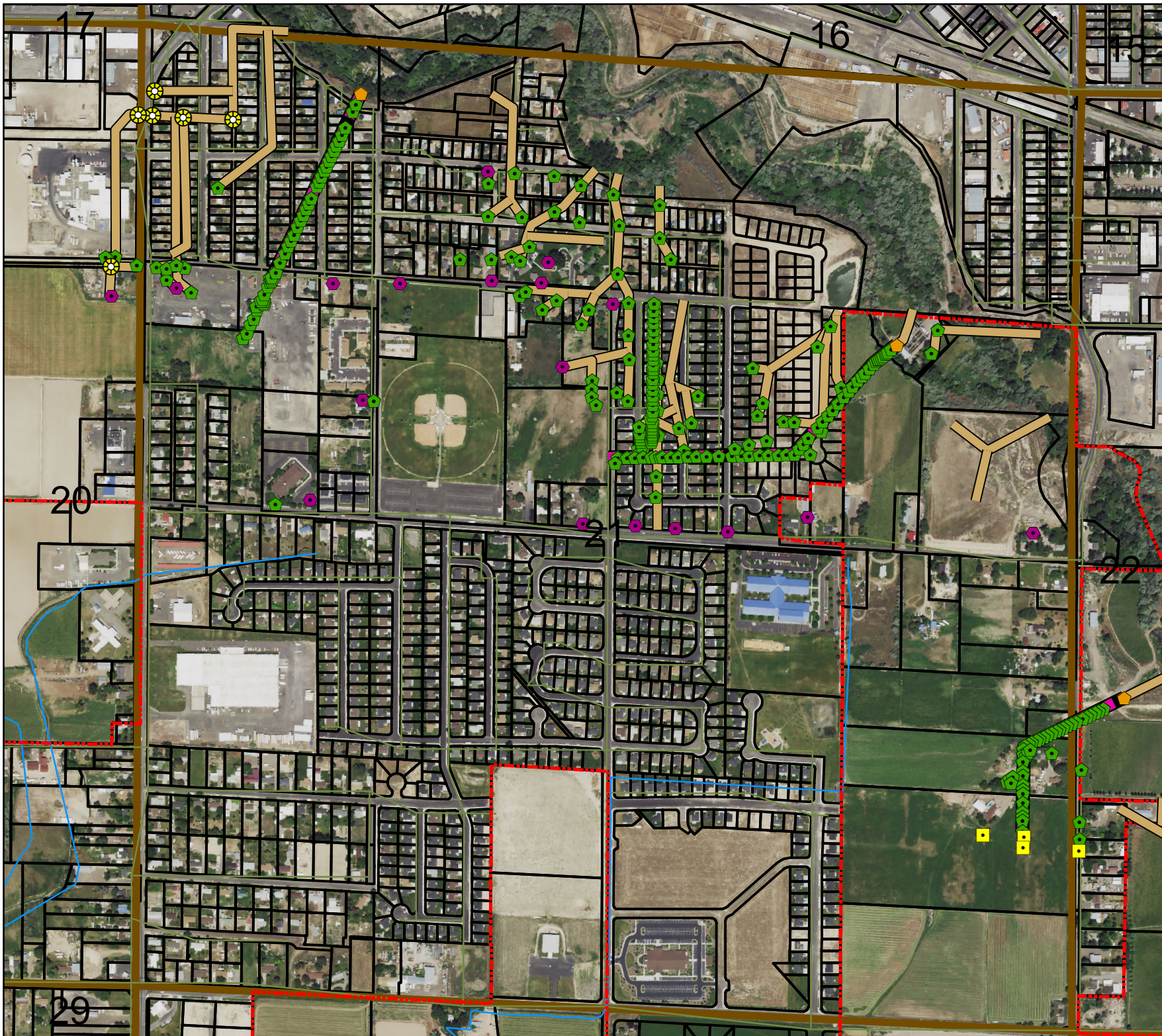


# Fish Hatchery Drainage Tunnel

Legal Description:  
SE1/4NE1/4

Section 21  
Township 10 South  
Range 17 East



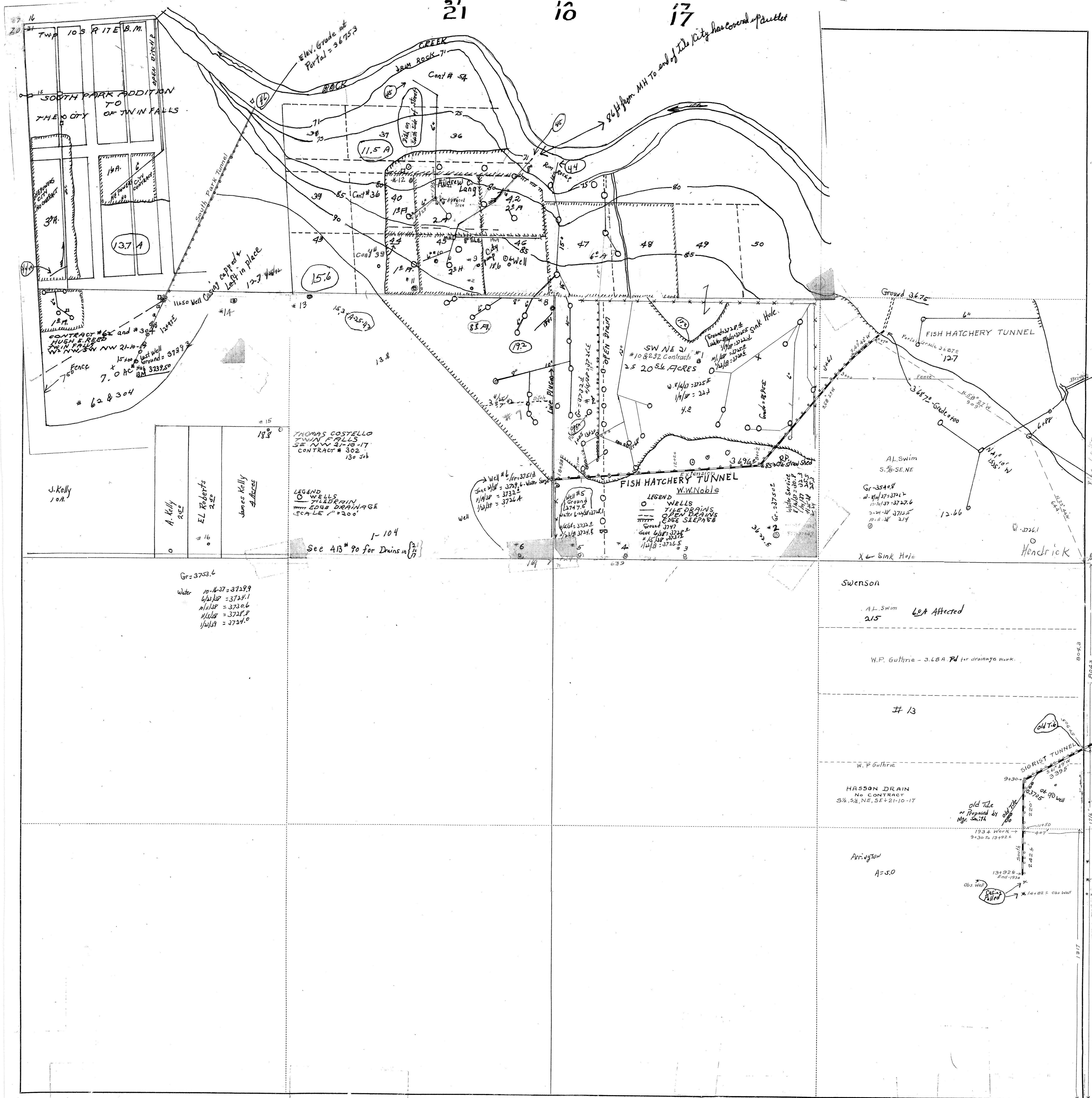
## Legend

-  Man Holes
-  Observation Wells
-  Tunnel Portals
-  Vertical Shafts
-  Wells
-  Drains
-  Tunnels
-  City Limits
-  Canals
-  Roads
-  Section Line
-  Parcels



This map is for informational and reference purposes only and may not have been prepared for, or be suitable for legal, engineering, or surveying purposes. Users of this information should review or consult the primary data, and information sources to ascertain the usability of information.

Revised: 10/2016



20 16  
20 17  
TWP 10 S R 17 E B. M.

SOUTH PARK ADDITION  
TO  
THE CITY  
OF TWIN FALLS

14A  
137A

CONTRACT # 62 and # 304  
HUGH E. REED  
TWIN FALLS, NW 21-10-17  
15' x 10' lot well  
7.0 AC Ground = 3739.3  
# 62 & 304

J. Kelly  
10A

A. Kelly  
250

EL Roberts  
250

James Kelly  
4 Acres

THOMAS COSTELLO  
TWIN FALLS  
SE NW 21-10-17  
CONTRACT # 302

LEGEND  
○ WELLS  
--- TIE DRAINS  
--- OPEN DRAINS  
--- EDGE DRAINAGE  
SCALE 1" = 200'

See 413 # 90 for Drains in 1/2

Gr = 3753.6  
Water  
10-11-37 = 3729.9  
6/21/37 = 3731.1  
11/11/37 = 3730.6  
1/15/38 = 3728.8  
1/16/39 = 3727.0

21 10 17

Elev. Grade at  
Portal = 3675.3

Cont # 54

11.5 A

Cont # 36

15.6

13.8

15.3

15.2

15.1

11.5 A

11.5 A

11.5 A

11.5 A

11.5 A

11.5 A

11.5 A

11.5 A

11.5 A

11.5 A

11.5 A

11.5 A

11.5 A

11.5 A

11.5 A

11.5 A

11.5 A

11.5 A

11.5 A

11.5 A

11.5 A

11.5 A

11.5 A

11.5 A

11.5 A

11.5 A

11.5 A

11.5 A

11.5 A

11.5 A

11.5 A

11.5 A

11.5 A

11.5 A

11.5 A

11.5 A

11.5 A

11.5 A

11.5 A

11.5 A

11.5 A

11.5 A

11.5 A

11.5 A

11.5 A

11.5 A

11.5 A

11.5 A

Ground 3675

FISH HATCHERY TUNNEL

3675-Grade 1000

AL Swim  
S. 7/8 - SE NE

Gr-3540.8  
W. 1/4 37-3721.1  
10-11-37-3727.6  
2-11-37-3713.5  
10-11-37-214

Swenson  
AL Swim  
215 60' Affected

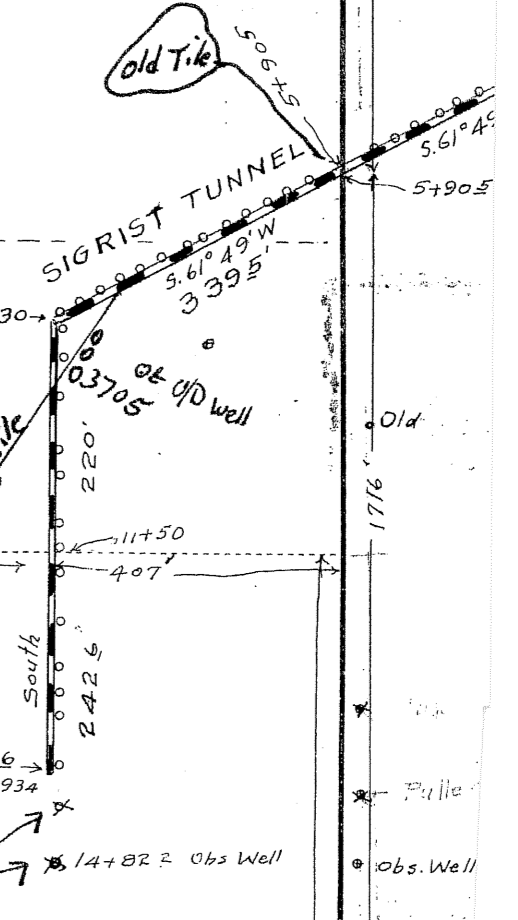
W.P. Guthrie - 3.68 A 70' for drainage work.

# 13

W.P. Guthrie

HASSON DRAIN  
NO CONTRACT  
S 1/2, S 1/4 NE, SE 1/4 21-10-17

Arrington  
A=5.0



2+  
Purlo  
Tunn  
Grade  
369

5490.8

507.4

1176

1317

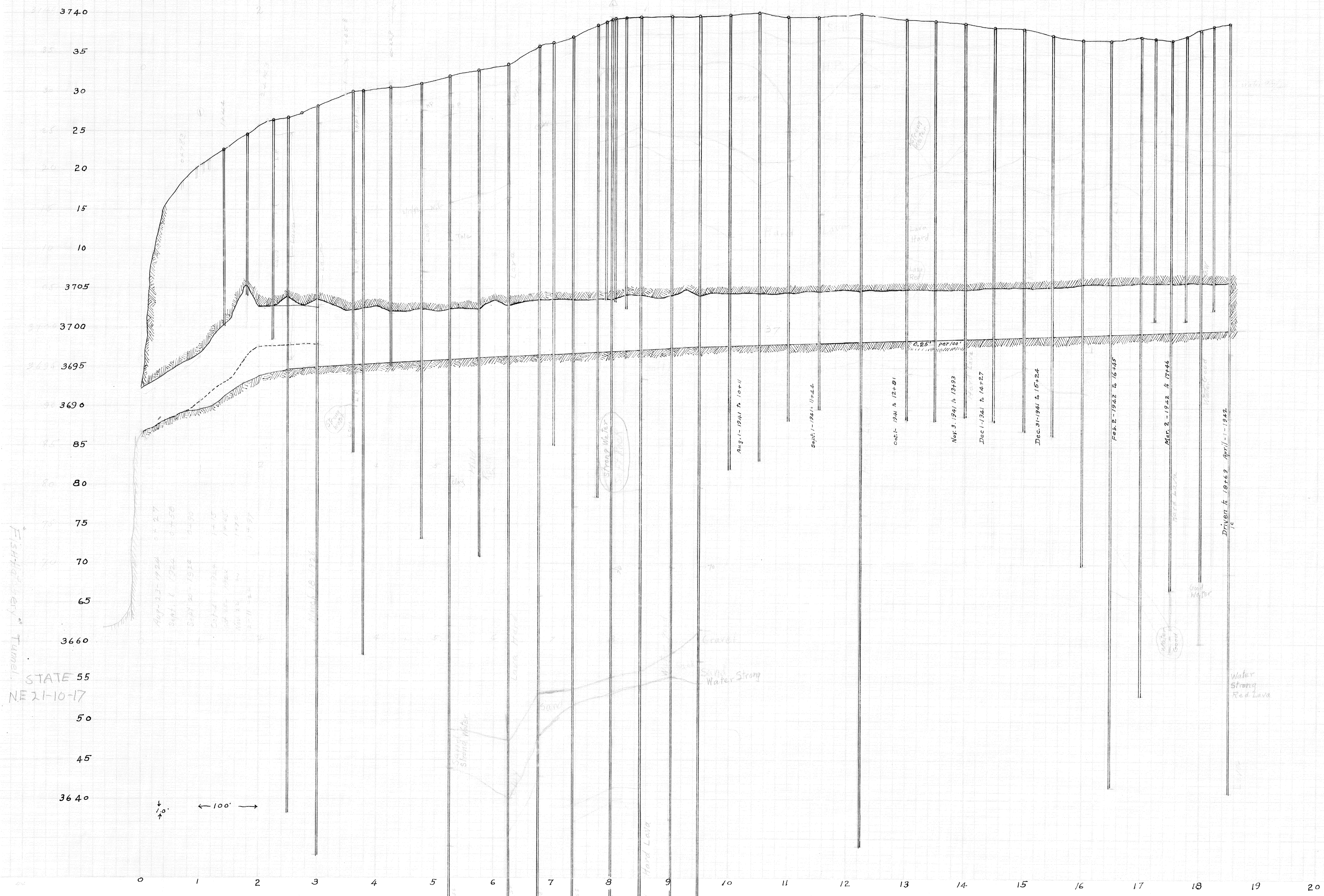
1317

1317

1317

1317

PROFILE OF THE FISH-HATCHERY TUNNEL  
IN NE 1/4: 21-10-17



19-7-15

STATE  
FISH-HATCHERY

Tunnel  
NE 21-10-17

19-7-15

FISH-HATCHERY Tunnel  
STATE  
NE 21-10-17