

Hannaman Drainage Tunnel

Legal Description:
NE1/4NE1/4

Section 18
Township 10 South
Range 17 East

Legend

- Man Holes
- Observation Wells
- Tunnel Portals
- Vertical Shafts
- Wells
- Drains
- Tunnels
- City Limits
- Canals
- Roads
- Section Line
- Parcels



This map is for informational and reference purposes only and may not have been prepared for, or be suitable for legal, engineering, or surveying purposes. Users of this information should review or consult the primary data, and information sources to ascertain the usability of information.

Revised: 10/2016

6-121

MAP OF TILE AND TUNNEL DRAINS



LEGEND

- Wells on old drains
- Wells on recent drains
- ⊙ Domestic wells
- ⊙ Observation wells
- Tile drains
- === Open drains
- Tunnel drains

Scale 1" = 500'
Feb. 1935.

18

17

19

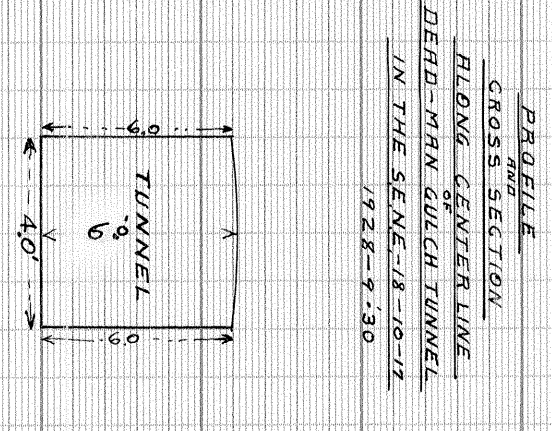
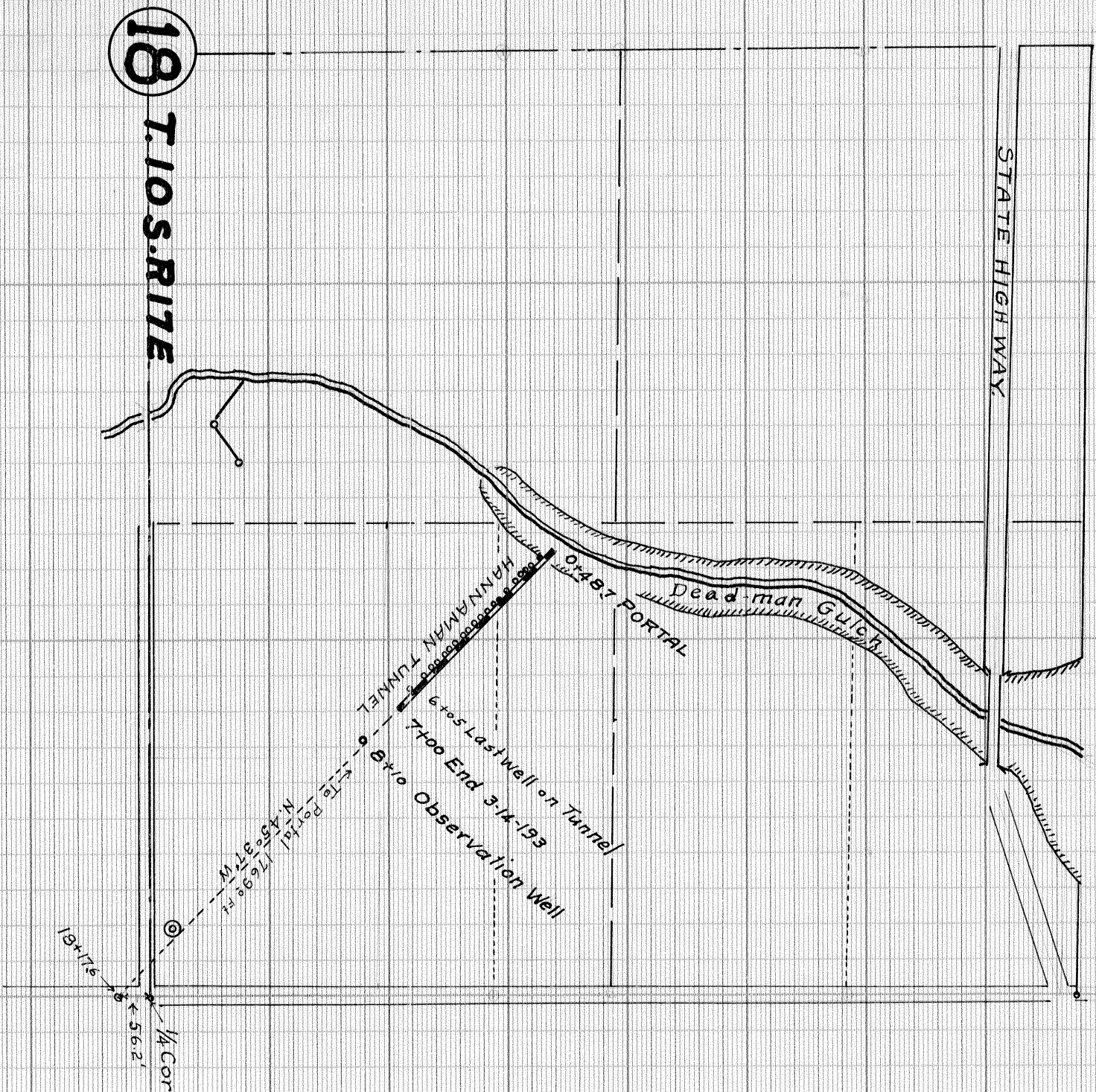
20

21

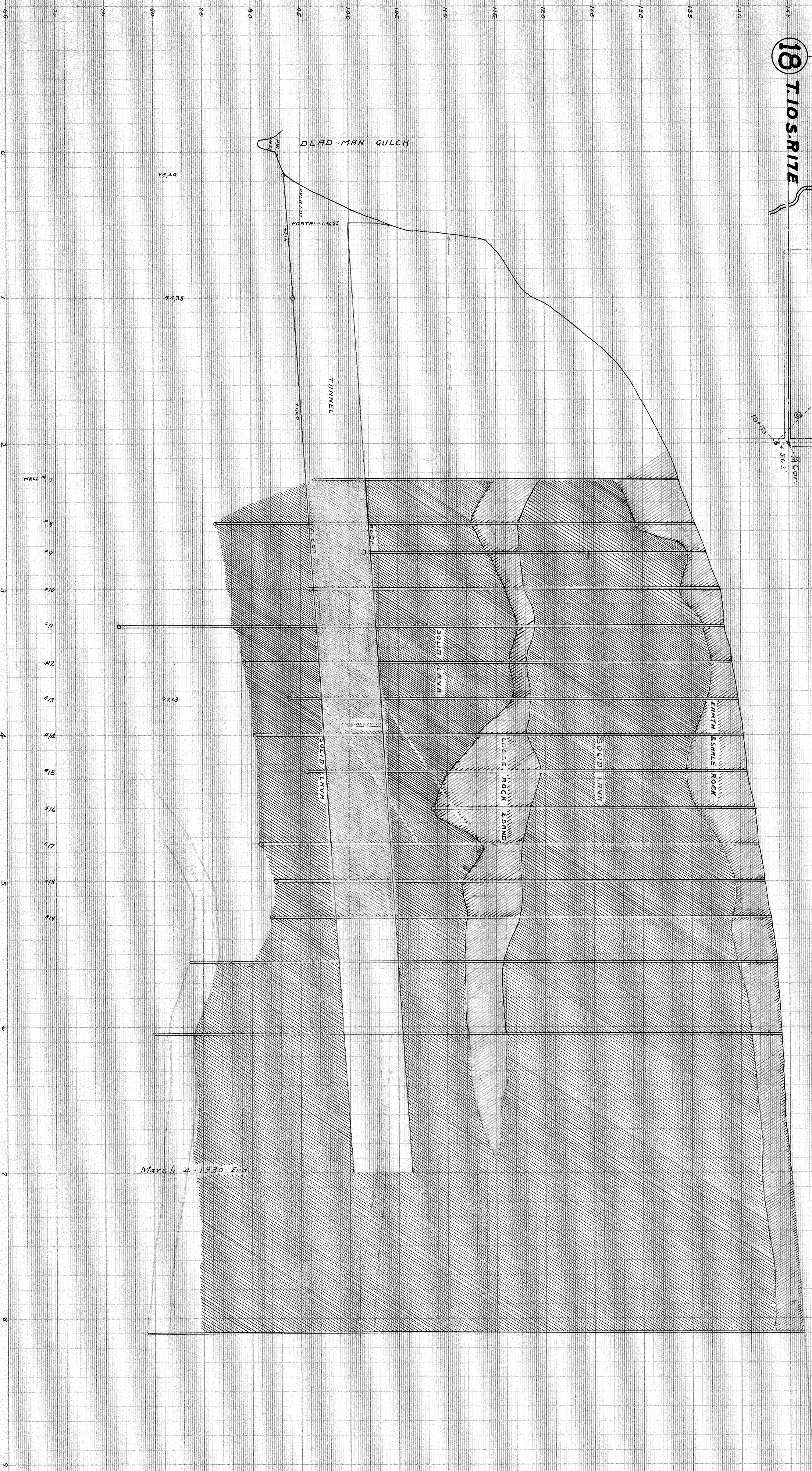
T. O. S. R. 17 E.

Quinn's 300' x 100' well with casing 1935 Contract # 102

MAP OF HANNAMAN TUNNEL



EXPLANATION
 CROSS SECTION
 HOLLOW - GUTTER LINE
 DOTTED - TOP OF SOLID ROCK
 DASHED - TOP OF SAND
 1:22.5 = 1:30



March 4-1930 End

End: 3-4-1930

STANDARD PROFILE PLATE B, 4 X 20.
 KEUFFEL & ESSER CO., NEW YORK

MADE IN U.S.A.

STANDARD PROFILE PLATE B, 4 X 20.
 KEUFFEL & ESSER CO., NEW YORK

MADE IN U.S.A.

18-10-17

18-10-17

18-10-17