

Hejtmanek Drainage Tunnel

Legal Description:
SE 1/4NW 1/4

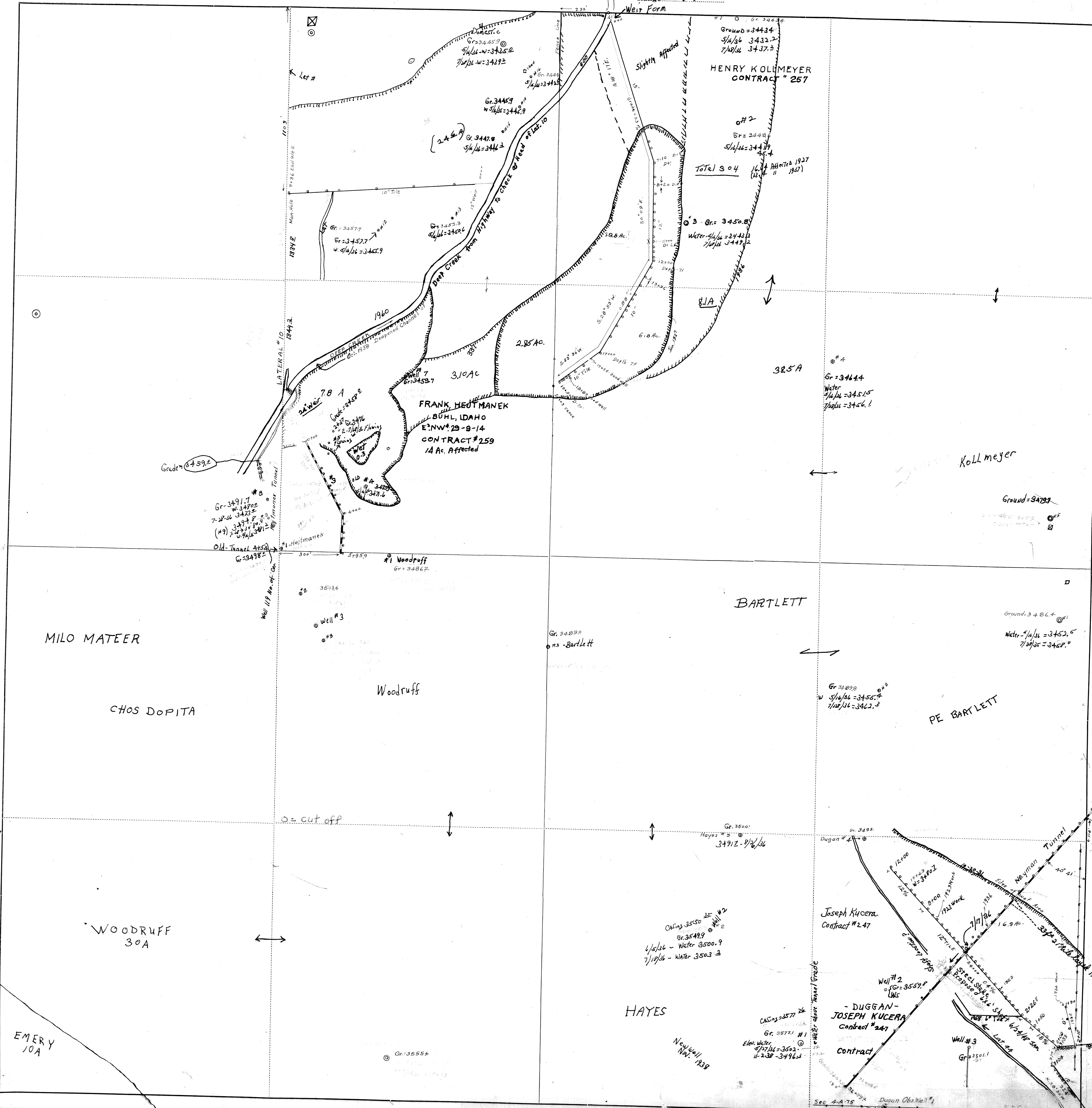
Section 29
Township 9 South
Range 14 East

Legend

- Man Holes
- Observation Wells
- Tunnel Portals
- Vertical Shafts
- Wells
- Drains
- Tunnels
- City Limits
- Canals
- Roads
- Section Line
- Parcels



This map is for informational and reference purposes only and may not have been prepared for, or be suitable for legal, engineering, or surveying purposes. Users of this information should review or consult the primary data, and information sources to ascertain the usability of information.



HENRY KOLLMAYER
CONTRACT # 257

FRANK HEITMANEK
BUHL, IDAHO
E: N.W. 29-9-14
CONTRACT # 259
14 Ac. Affected

BARTLETT

JOSEPH KUCERA
CONTRACT # 247

DUGGAN-
JOSEPH KUCERA
CONTRACT # 247

HAYES

MILO MATEER

CHOS DOPITA

WOODRUFF
30A

EMERY
10A

PE BARTLETT

Kollmeyer

o = cut off

CASING 3550
Gr. 3549.9
1/15/36 - Water 3500.9
7/19/36 - Water 3503.3

CASING 3577
Gr. 3577.1 #1
Elev. Water 3577.1
11-23-36 - 3496.3

New Well #139

Total 304

385A

310A

285A

Well #3

Woodruff

Gr. 3489.0
#3 - Bartlett

Gr. 3489.0
W 5/16/36 = 3455.4
7/12/36 = 3422.3

Well #2
Gr. = 3557.8
LWS

Well #3
Gr. = 3501.1

Gr. 3443.4
5/16/36 3432.2
7/12/36 3437.3

#2
Gr. = 3448
5/16/36 = 3447.9

#3 - Gr. = 3450.8
Water 5/16/36 = 3443.3
7/12/36 3449.2

#4
Gr. = 3464.4
Water 5/16/36 = 3451.5
7/12/36 = 3456.1

Ground = 3473.7

Ground = 3486.4
Water 5/16/36 = 3452.5
7/12/36 = 3457.0

Gr. 3491.7
W 3470.0
7-28-36 3473.8
(#9) 3474.8
7-27-36 3481.2
Old Tunnel At 52'

#1 Woodruff
Gr. = 3486.2

#2 3503.6

Gr. 3500.0
Hayes #3
3491.2 - 9/26/36

Gr. 3493.0
Dugan #4

Gr. 3550.0
W 3480.2

Gr. 3557.1
W 3557.1

Gr. 3501.1
Dugan Obs Well #1

Let #

Gr. = 3457.7
W 5/16/36 = 3455.9

LATERAL #10
1844.2

Gr. 3491.7
W 3470.0
7-28-36 3473.8
(#9) 3474.8
7-27-36 3481.2

Well #1 No. of Con

o = cut off

Gr. 3555.6

Gr. 3555.6

Gr. 3489.0
#3 - Bartlett

Sec 4-A-75