

# Hobson Drainage Tunnel

Legal Description:  
NE1/4NE1/4

Section 18  
Township 9 South  
Range 15 East

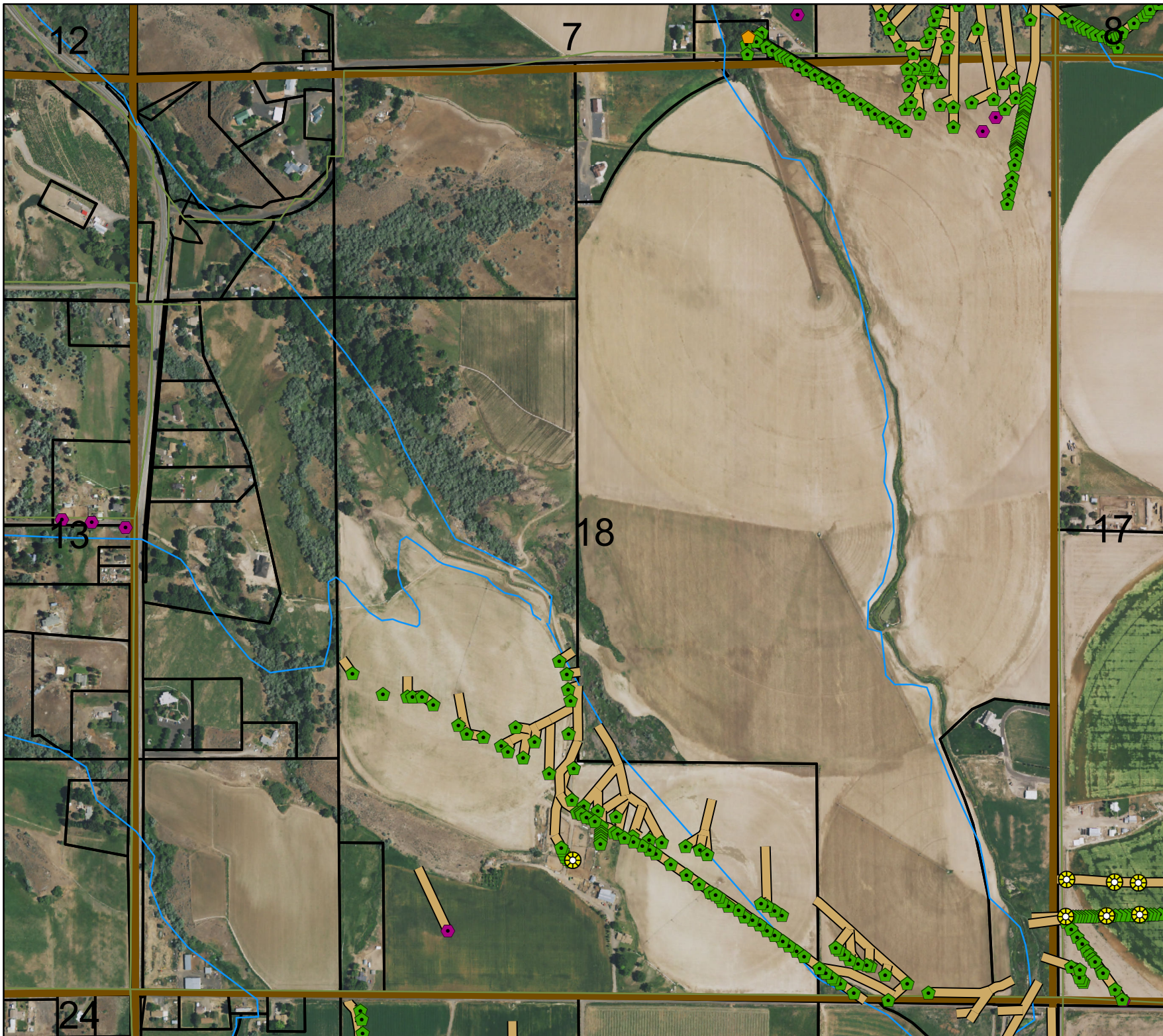
**Legend**

- Man Holes
- Observation Wells
- Tunnel Portals
- Vertical Shafts
- Wells
- Drains
- Tunnels
- City Limits
- Canals
- Roads
- Section Line
- Parcels



This map is for informational and reference purposes only and may not have been prepared for, or be suitable for legal, engineering, or surveying purposes. Users of this information should review or consult the primary data, and information sources to ascertain the usability of information.

Revised: 10/2016



SPIKER TUNNEL

Geo. Hobson  
Contract 303  
CECIL LYONS

F.R. Smith  
# 56

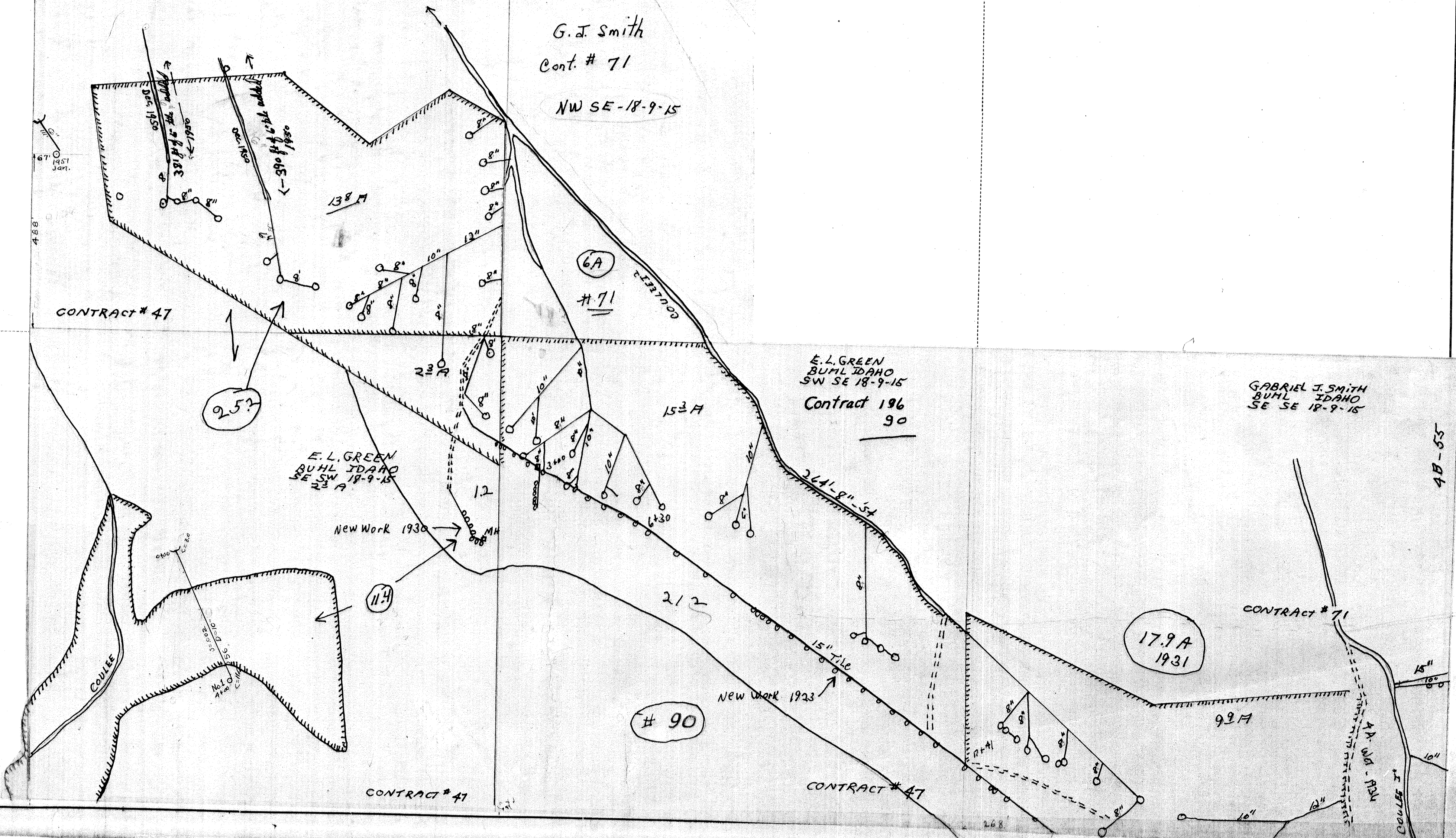
E.L. GREEN  
BUHL IDAHO  
NE. SW. 18-9-15

G.I. Smith  
Cont. # 71  
NW SE-18-9-15

E.L. GREEN  
BUHL IDAHO  
SW SE 18-9-15  
Contract 196  
90

GABRIEL J. SMITH  
BUHL IDAHO  
SE SE 18-9-15

Frank Schoeler  
# 311



4B-55

8648  
330  
3323

Chas Glenn

C.E. Leeper  
Contract - 316

C.E. Leeper  
Contract #316

112  
72  
184

T. SWASSOM  
WIN FALLS  
CONTRACT # 85  
1905-1909

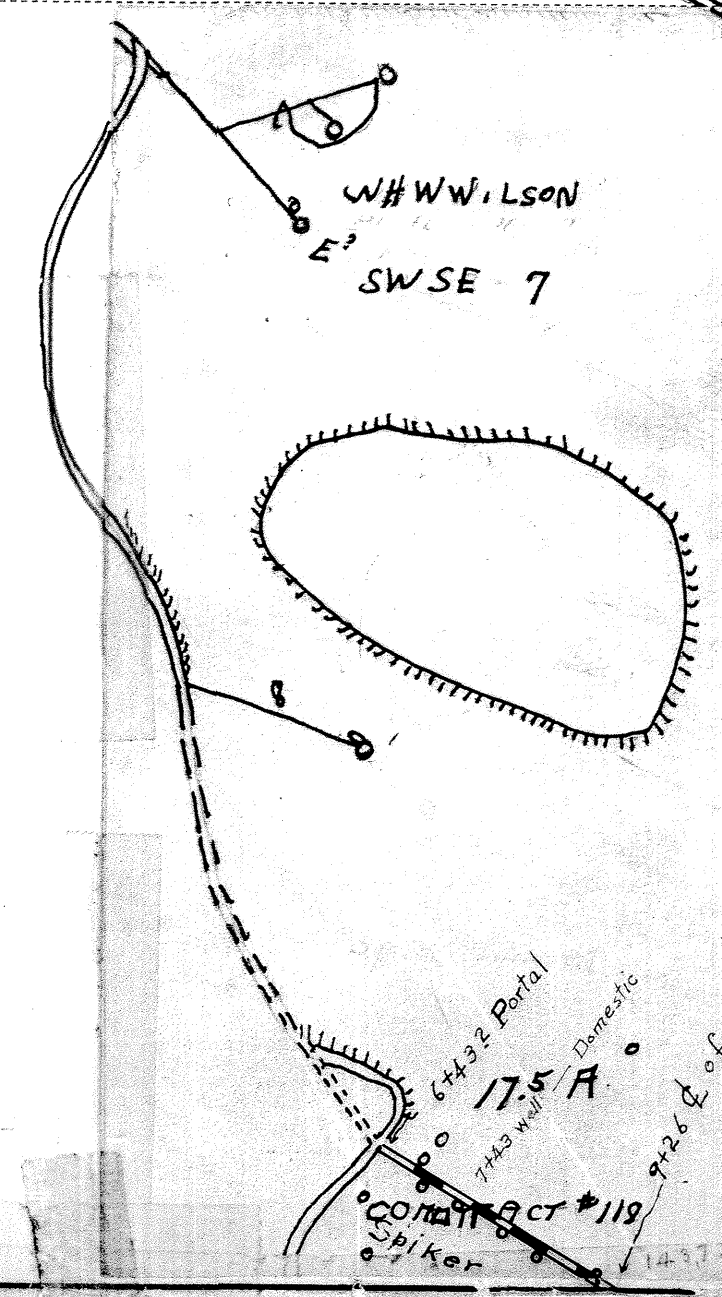
W.D. Weaver  
1905-1909

LEGEND  
O Well  
= Tile Drain  
--- 2" x 4" Pipe  
Scale 1" = 200'

William K. Miller

213' 8" tile  
Wells drilled  
1957

3.7 Affected  
3" Manhole Flume



Hutchinson

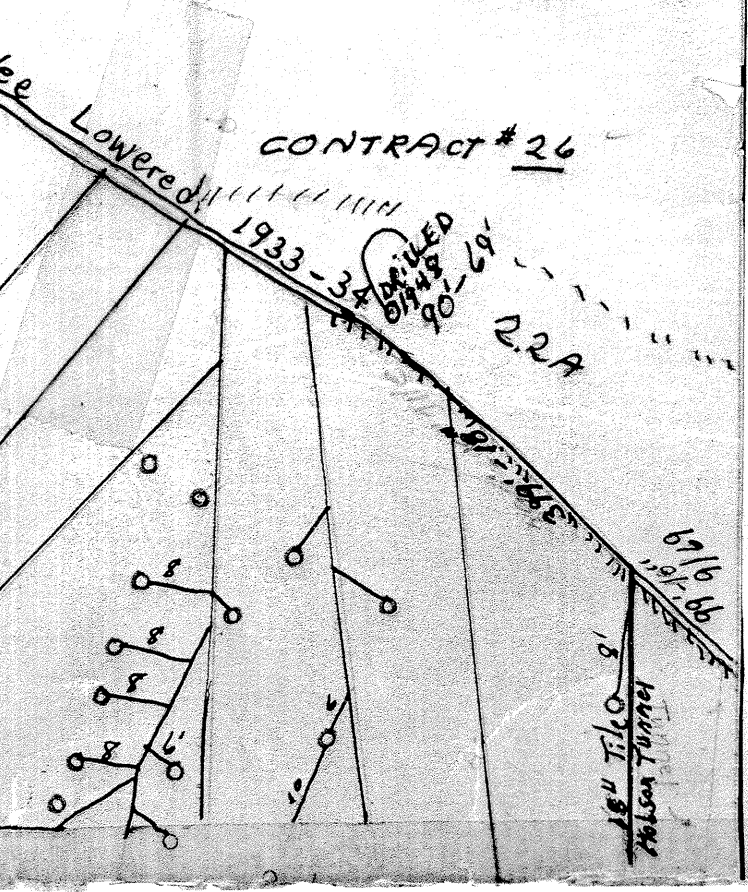
SMITH CARE  
BURL IDAHO  
SE SE 7-9-15

288  
312  
312

CONTRACT # 26

288 Acres

175 A  
CONTRACT # 119  
Chiker





J.T.SPIKER

3.7 Ac. Wet

16 Ac. Affected

J.T.SPIKER

2.8 Ac. Dry

Contract # 118

BANK. FROGERSON

Wm HUTCHINSON  
CONTRACT # 308

1.2 Ac.

Wet  
28.8 Ac.

Wm. FANCHER

Contract # 359

COULLEE

Deepened 1932

4.7 Ac. Wet

20F# 24" Tile

SPIKER TUNNEL

6.43 Por

7.43 Por

9.22 Por

10.99 Por

12.77 Por

14.54 Por

16.31 Por

18.08 Por

19.85 Por

21.62 Por

23.39 Por

25.16 Por

26.93 Por

28.70 Por

30.47 Por

32.24 Por

34.01 Por

35.78 Por

37.55 Por

39.32 Por

41.09 Por

42.86 Por

44.63 Por

46.40 Por

48.17 Por

49.94 Por

51.71 Por

53.48 Por

55.25 Por

57.02 Por

58.79 Por

60.56 Por

62.33 Por

Dry  
5.7 Ac.

5.34 Portal

HOBSON TUNNEL

8+66 End  
1930

Dry  
4.2 Ac.

6.8 Ac. Affected

K.B.DEWEY

No Contract

GEO. HOBSON

Contract # 303

Scale 1"=200' A-B 132