



# Hypotheek Drainage Tunnel

Legal Description:  
NE1/4SW1/4

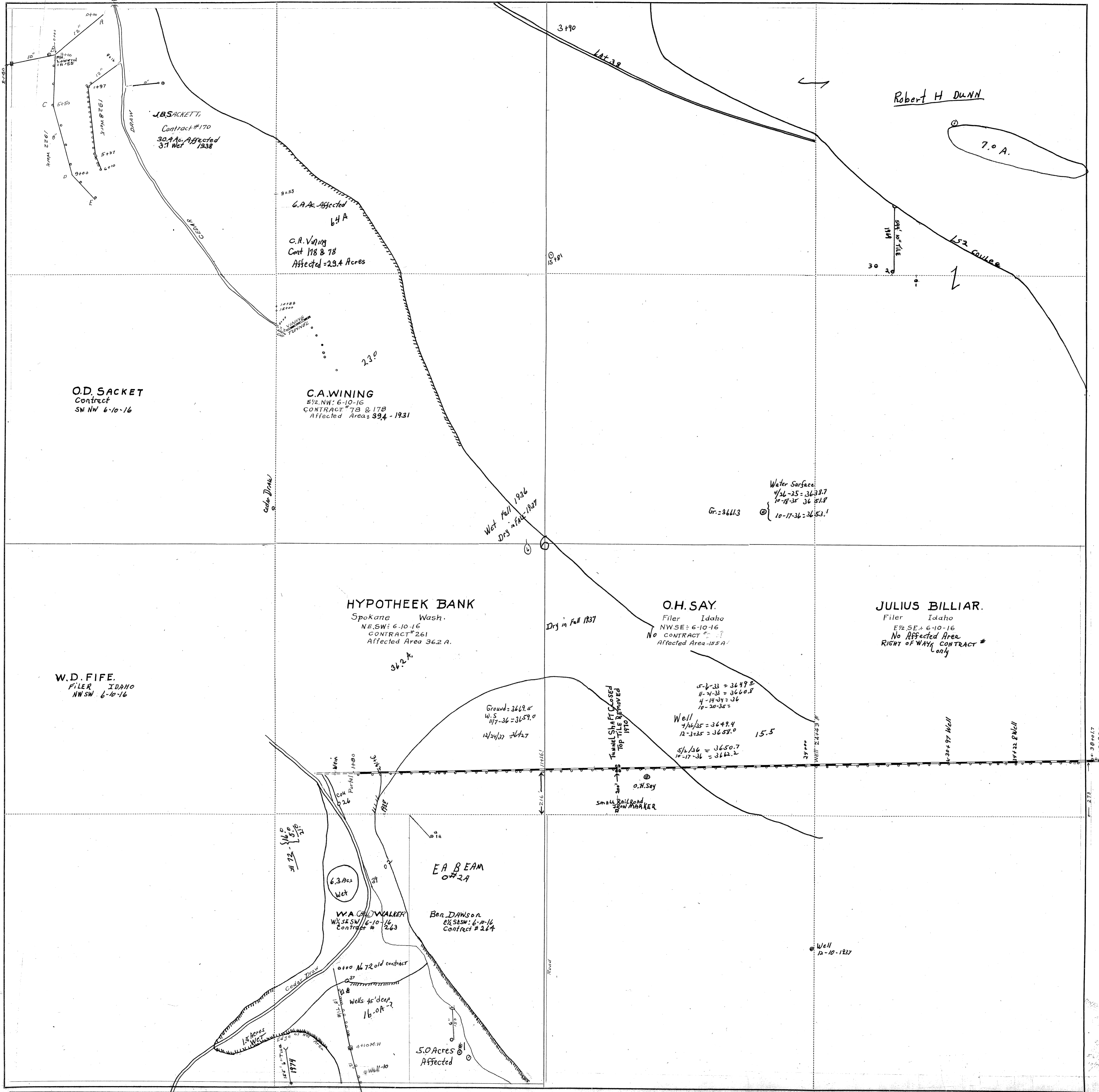
Section 6  
Township 10 South  
Range 16 East

**Legend**

- Man Holes
- Observation Wells
- Tunnel Portals
- Vertical Shafts
- Wells
- Drains
- Tunnels
- City Limits
- Canals
- Roads
- Section Line
- Parcels



This map is for informational and reference purposes only and may not have been prepared for, or be suitable for legal, engineering, or surveying purposes. Users of this information should review or consult the primary data, and information sources to ascertain the usability of information.



J.B. SACKETT,  
Contract # 170  
30.4 Ac. Affected  
3.1 Wet  
1938

OD. SACKETT  
Contract  
SW NW 6-10-16

C.A. WINING  
Contract # 78 & 79  
Affected = 23.4 Acres

C.A. WINING  
5/2 NW: 6-10-16  
CONTRACT # 78 & 79  
Affected Area: 39.4 - 1931

HYPOTHEEK BANK  
Spokane Wash.  
NE SW: 6-10-16  
CONTRACT # 261  
Affected Area 36.2 A.

O.H. SAY  
Filer Idaho  
NW SE: 6-10-16  
CONTRACT # 117  
Affected Area 15.5 A

JULIUS BILLIAR.  
Filer Idaho  
E 1/2 SE: 6-10-16  
No Affected Area  
RIGHT OF WAY CONTRACT #  
only

W.D. FIFE.  
FILER IDAHO  
NW SW 6-10-16

EA BEAM  
O# 2A

W.A. CALDWELL  
W 1/2 SW: 6-10-16  
Contract # 263

BEN. DAWSON.  
E 1/2 SW: 6-10-16  
Contract # 264

Wells:  
5-1-33 = 3649.0  
11-2-33 = 3660.8  
4-14-34 = 36  
10-20-35 =  
Well  
7/10/35 = 3649.4  
12-3-35 = 3658.0  
5/6/36 = 3650.7  
10-17-36 = 3642.2

Water Surface:  
7/26-35 = 3638.7  
10-18-35 = 3651.8  
10-17-36 = 3653.1

Well  
12-10-1237

W.A. CALDWELL  
W 1/2 SW: 6-10-16  
Contract # 263

Wells 45' deep  
16.0 A - 7

5.0 Acres #1  
Affected

Small Railroad Sewer Maker

Tunnel Shaft Closed  
Top Tile Removed  
1910

Well 24-24-37

Well 24-24-37

HYPOTHEK BANK TUNNEL  
 SW SW 7-10-16  
 EAST SIDE

■ EARTH EXCAVATION - Feb 7 to Feb 21-1925  
 ■ " " Feb 21 to March 10 "  
 ■ ROCK EXCAVATION " 21 " " 10 "  
 " " March 10 to March 16 " 1+2  
 " " 16 " April " 1+4

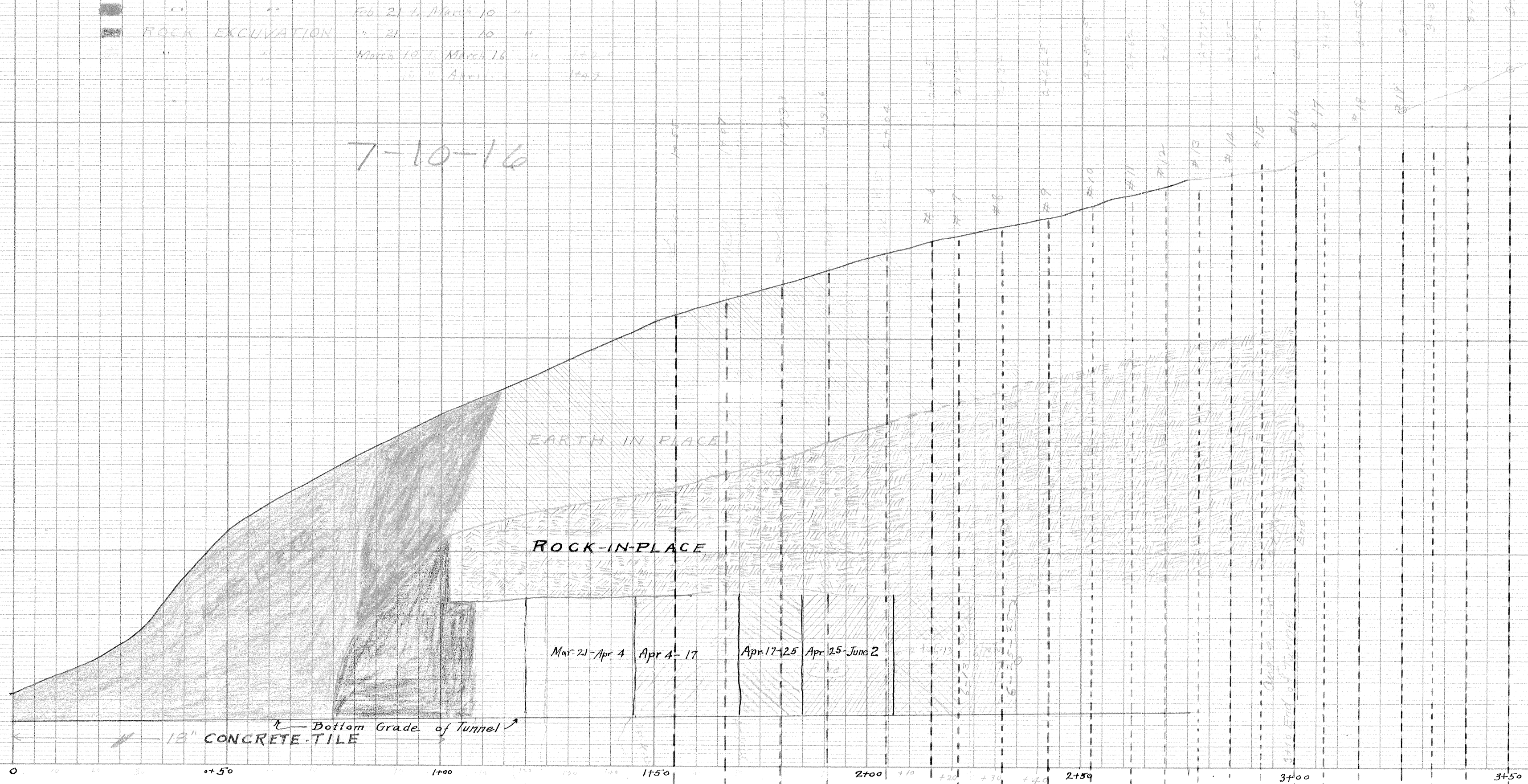
7-10-16

130  
128  
126  
124  
122  
120  
118  
116  
114  
112  
110  
108  
106  
104  
102  
100

0 10 20 30 40 50 60 70 80 90 100 110 120 130 140 150 160 170 180 190 200 210 220 230 240 250 260 270 280 290 300 310 320 330 340 350

7-10-16

7-10-16



18" CONCRETE TILE  
 Bottom Grade of Tunnel

EARTH IN PLACE  
 ROCK-IN-PLACE

Mar 21-Apr 4 Apr 4-17 Apr 17-25 Apr 25-June 2

6-13 6-15 6-16

END OF TUNNEL

1+55 1+67 1+80 1+91 2+04 2+15 2+22 2+32 2+42 2+52 2+62 2+67 2+77 2+85 2+92 3+00 3+15 3+15 3+25 3+32 3+40 3+50 3+

HYPOTHEEKBANK TUNNEL  
NE.SW. 6-10-16

CORDELIA TELFORD  
SW 1/4 NE 1/4 6-10-16

D.H. SAY  
NW 1/4 SE 1/4 6-10-16

