

Johnston Drainage Tunnel

Legal Description:
NE1/4NW1/4

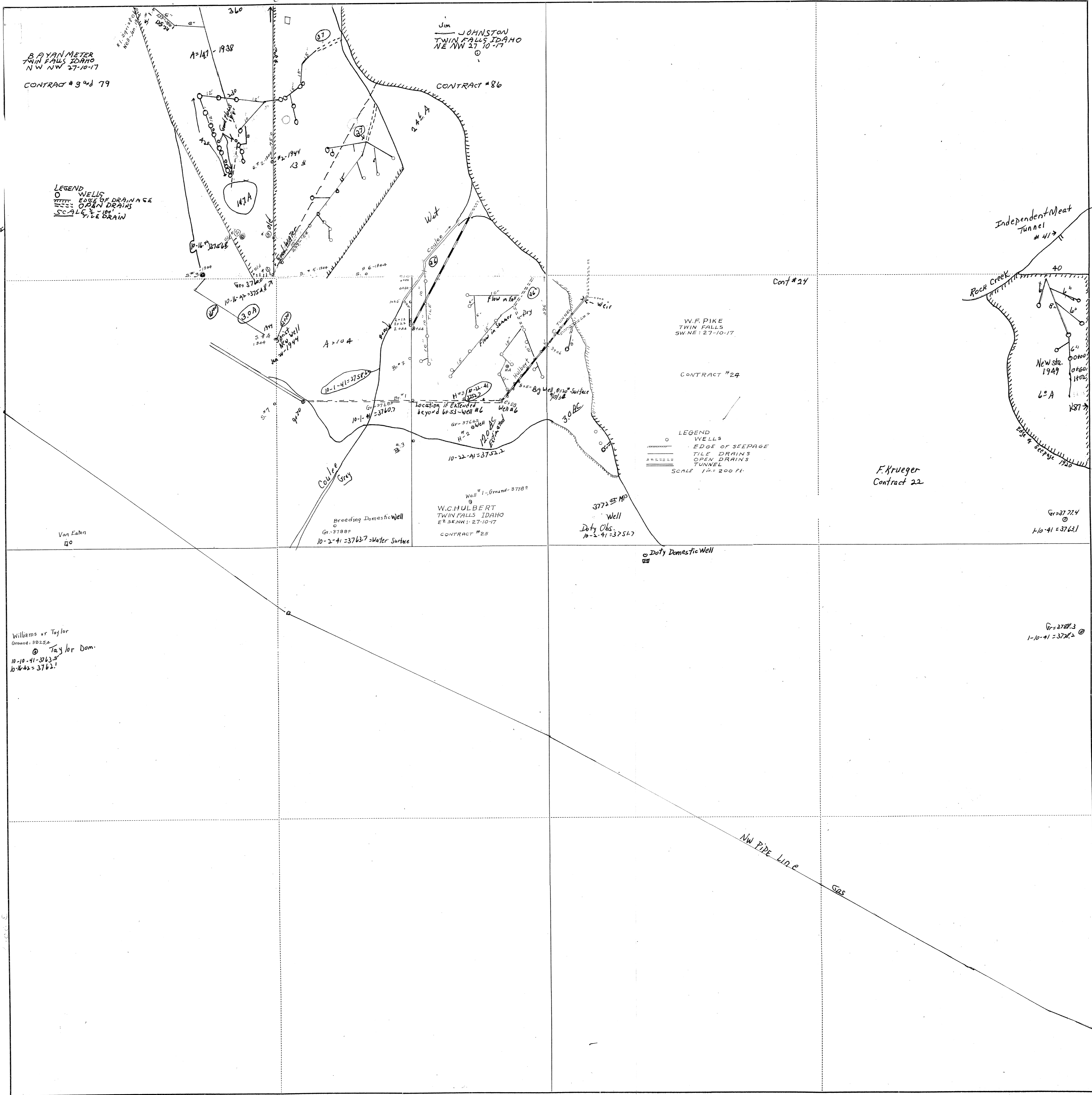
Section 27
Township 10 South
Range 17 East

Legend

- Man Holes
- Observation Wells
- Tunnel Portals
- Vertical Shafts
- Wells
- Drains
- Tunnels
- City Limits
- Canals
- Roads
- Section Line
- Parcels



This map is for informational and reference purposes only and may not have been prepared for, or be suitable for legal, engineering, or surveying purposes. Users of this information should review or consult the primary data, and information sources to ascertain the usability of information.



B. AYAN METER
TWIN FALLS IDAHO
NW NW 27-10-17
CONTRACT # 9 and 79

Jim JOHNSON
TWIN FALLS IDAHO
NE NW 27-10-17

LEGEND
WELLS
EDGE OF DRAINAGE
OPEN DRAINS
SCALE 1" = 100'

W.F. PIKE
TWIN FALLS
SW NE 27-10-17

CONTRACT # 24

LEGEND
WELLS
EDGE OF SEEPAGE
TILE DRAINS
OPEN DRAINS
TUNNEL
SCALE 1" = 200'

F. Krueger
Contract 22

W.C. HULBERT
TWIN FALLS IDAHO
E 3/4 SW NW 27-10-17
CONTRACT # 25

3772 MP
Well
Duty Obs.
10-2-41 = 37517

Van Eaton
20

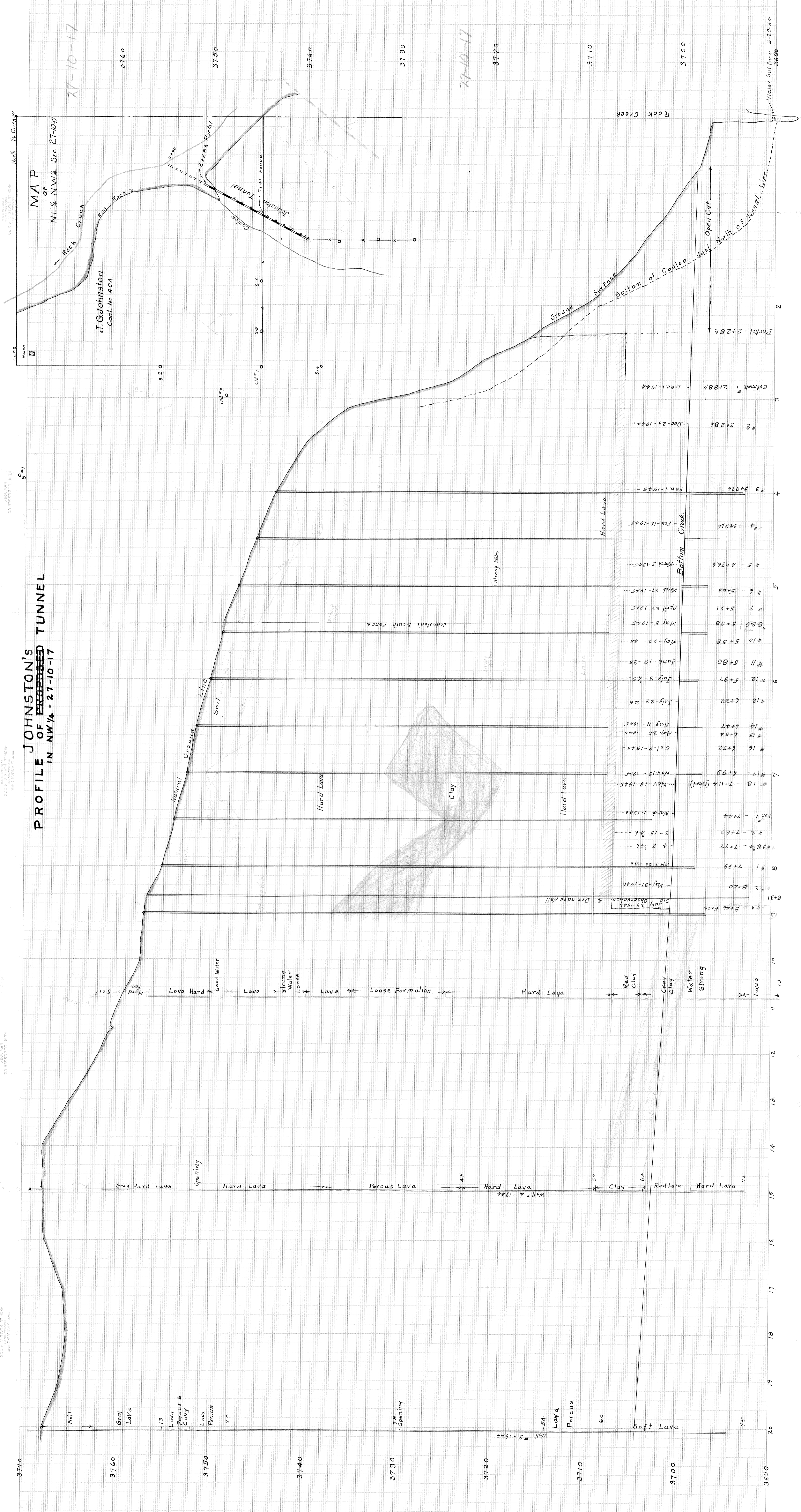
Williams or Taylor
Ground 3825.6
Taylor Dom.
10-10-41 = 3763.5
10-10-42 = 3762.1

Gr = 3724
1-10-41 = 3762.1

NW PIPE Line

Gas

PROFILE OF JOHNSTON'S TUNNEL IN NW 1/4 - 27-10-17



Station	Date	Notes
#1	7+99	May 31 - 1946
#2	8+40	May 31 - 1946
#3	8+46 Face	July 29 - 1944
#4	8+31	Old Observation & Drainage Well
#5	7+99	May 31 - 1946
#6	7+77	Apr 2 - 1946
#7	7+62	Mar 15 - 1946
#8	7+44	Mar 1 - 1946
#9	7+114 (Final)	Nov 19 - 1945
#10	6+99	Nov 13 - 1945
#11	6+72	Oct 2 - 1945
#12	6+54	Aug 25 - 1945
#13	6+47	Aug 11 - 1945
#14	6+22	July 23 - 1945
#15	5+97	July 3 - 1945
#16	5+80	June 19 - 1945
#17	5+58	May 22 - 1945
#18	5+38	May 5 - 1945
#19	5+21	April 23 - 1945
#20	5+103	March 27 - 1945
#21	4+766	March 5 - 1945
#22	4+316	Feb 16 - 1945
#23	3+976	Feb 1 - 1945
#24	3+286	Dec 23 - 1944
#25	2+885	Dec 1 - 1944

MA P
OF
NE 1/4 NW 1/4 Sec 27-10-17

J.G. Johnston
Cont. No. 404.

Rock Creek

Johnston Tunnel

Old Lava

Clay

Hard Lava

Soft Lava

Open Cut

Water Surface 4-29-44

3770

3760

3750

3740

3730

3720

3710

3700

3690

0

1

2

3

4

5

6

7

8

9

10

11

12

13

14

15

16

17

18

19

20