

Neyman Drainage Tunnel

Legal Description:
NW1/4SW1/4

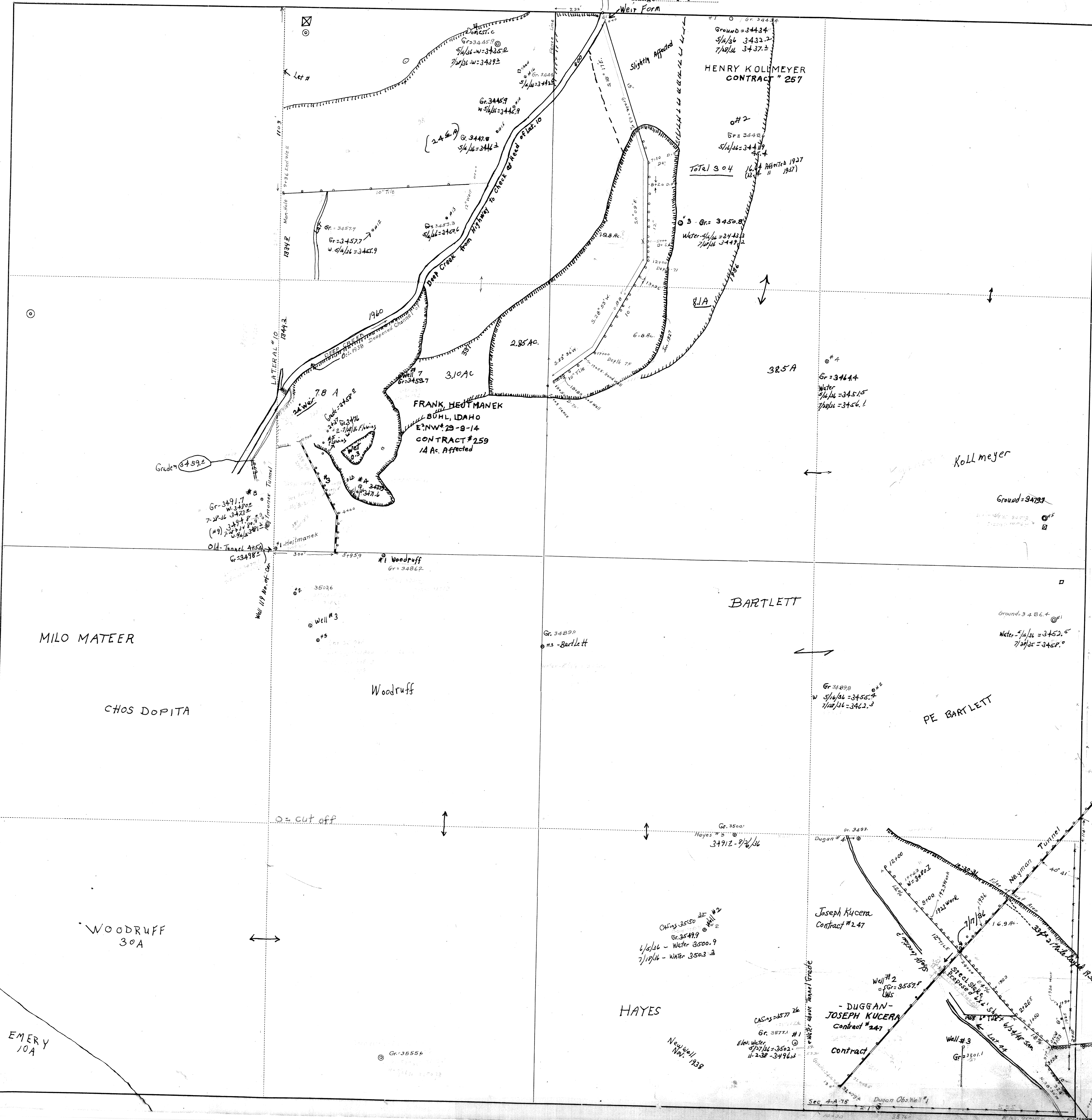
Section 28
Township 9 South
Range 14 East

Legend

- Man Holes
- Observation Wells
- Tunnel Portals
- Vertical Shafts
- Wells
- Drains
- Tunnels
- City Limits
- Canals
- Roads
- Section Line
- Parcels



This map is for informational and reference purposes only and may not have been prepared for, or be suitable for legal, engineering, or surveying purposes. Users of this information should review or consult the primary data, and information sources to ascertain the usability of information.



HENRY KOLLMAYER
CONTRACT # 257

FRANK HEITMANEK
BUHL, IDAHO
E: N.W. 29-9-14
CONTRACT # 259
14 Ac. Affected

BARTLETT

HAYES

MILO MATEER

CHOS DOPITA

WOODRUFF
30A

EMERY
10A

Ground = 3443.4
5/16/36 3432.2
7/19/36 3437.2

#2
Gr = 3448
5/16/36 = 3449.9
Total 304
16.14 (1927)
11 (1927)

#3 - Gr = 3450.8
Water 5/16/36 = 3443.3
7/19/36 3449.2

#4
Gr = 3464.4
Water 5/16/36 = 3451.5
7/19/36 = 3456.1

Ground = 3473.7

Ground = 3486.4
Water 5/16/36 = 3452.5
7/19/36 = 3457.0

Gr 3489.8
W 5/16/36 = 3455.4
7/19/36 = 3462.3

Joseph Kucera
Contract # 247

- DUGGAN -
JOSEPH KUCERA
Contract # 247

Casings 3550
Gr 3549.9
4/5/36 - Water 3500.9
7/19/36 - Water 3503.3

Casings 3577
Gr 3577.1 #1
Elev. Water 5/17/36 = 3502.1
11-23-36 - 3496.2

Well #2
Gr = 3557.8
LWS

Well #3
Gr = 3501.1

Gr 3491.7
W 3470.5
7-28-36 3473.8
(#9) 3474.8
7-27-36 3481.2

#1 Woodruff
Gr = 3486.2

#2 3503.6
Well #3

Gr 3489.0
#3 - Bartlett

Gr 3500.0
Hayes #5
3491.2 - 9/26/36

Gr 3493.0
Dugan #4

Well #2
Gr = 3557.8
LWS

Well #3
Gr = 3501.1

Sec 4-A-75
Dugan Obs Well #1

o = cut off

New Well
NW 1/4 1939

Gr 3555.6

Sec 4-A-75
Dugan Obs Well #1