













# Padget 1 & 2 Drainage Tunnel

Legal Description:  
SW1/4SW1/4

Section 7  
Township 10 South  
Range 16 East

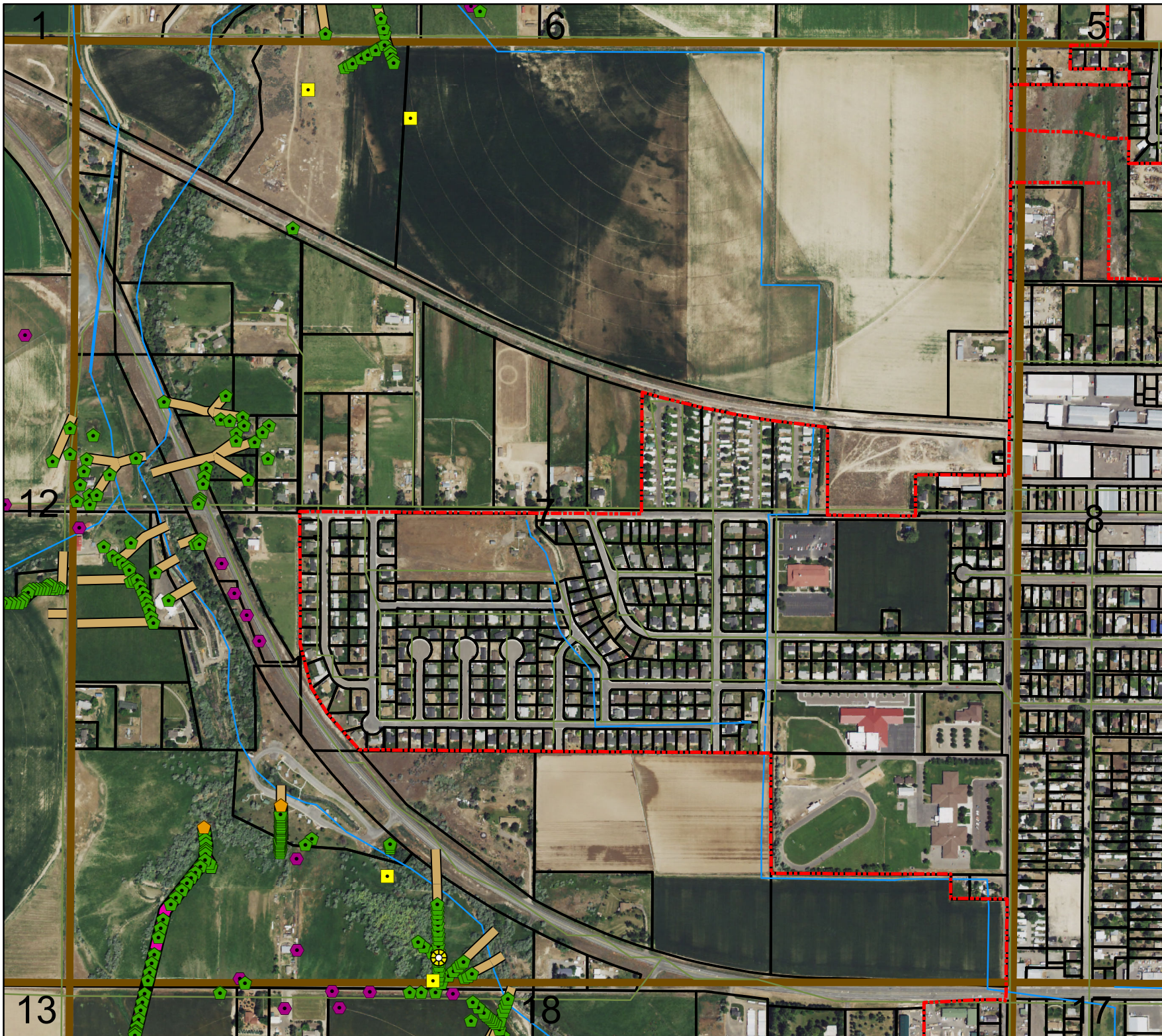
**Legend**

-  Man Holes
-  Observation Wells
-  Tunnel Portals
-  Vertical Shafts
-  Wells
-  Drains
-  Tunnels
-  City Limits
-  Canals
-  Roads
-  Section Line
-  Parcels

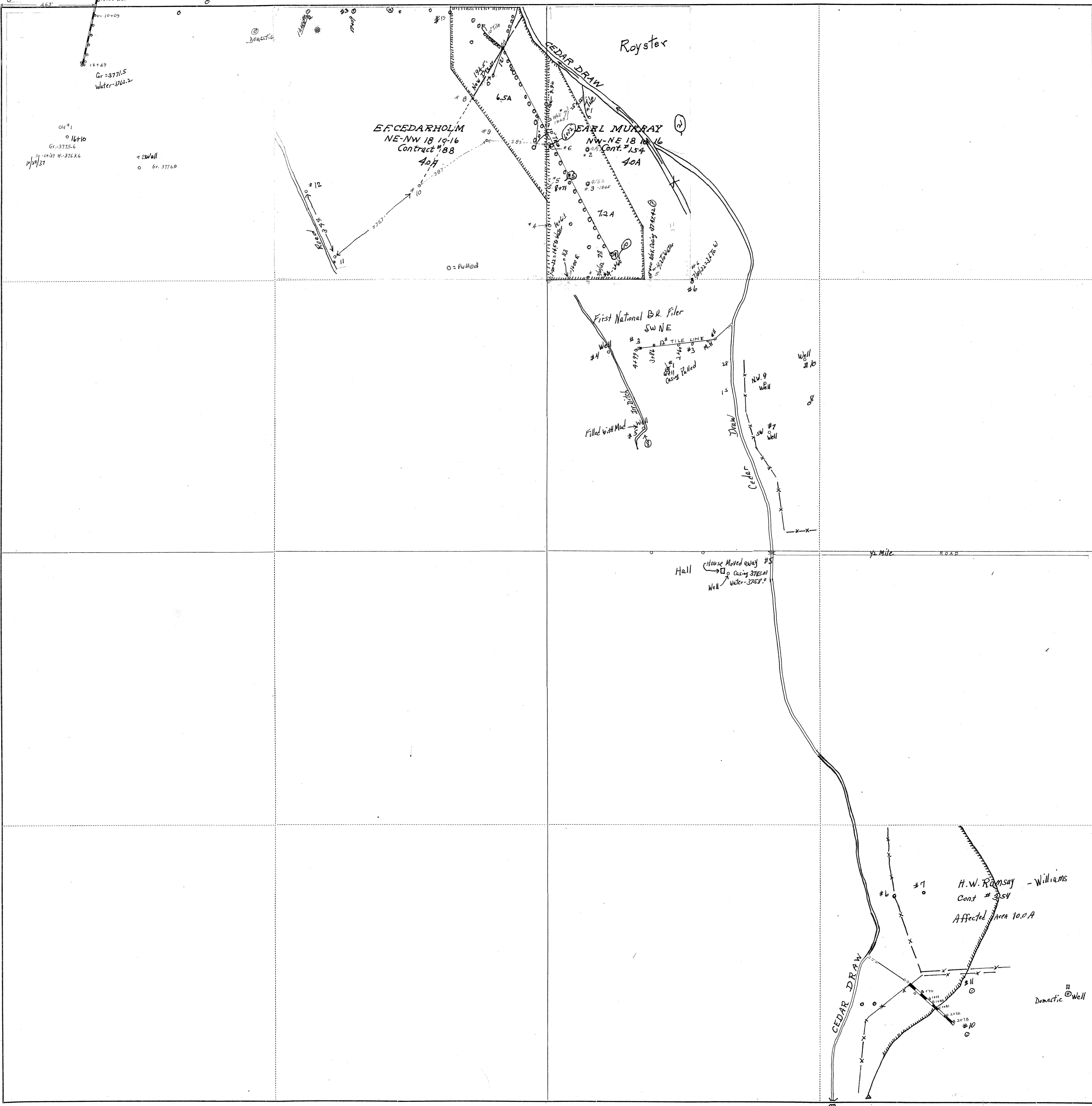


This map is for informational and reference purposes only and may not have been prepared for, or be suitable for legal, engineering, or surveying purposes. Users of this information should review or consult the primary data, and information sources to ascertain the usability of information.

Revised: 10/2016







Gr-3771.5  
Water-3702.2

04<sup>th</sup>  
Gr-3775.6  
19-19-37 W-3763.6  
11/1/37

#2 Well  
Gr. 3776.8

B.F. CEDARHOLM  
NE-NW 18 19-16  
Contract #88  
40A

EARL MURRAY  
NW-NE 18 19-16  
Cont. #154  
40A

First National Bk. Filer  
SW NE

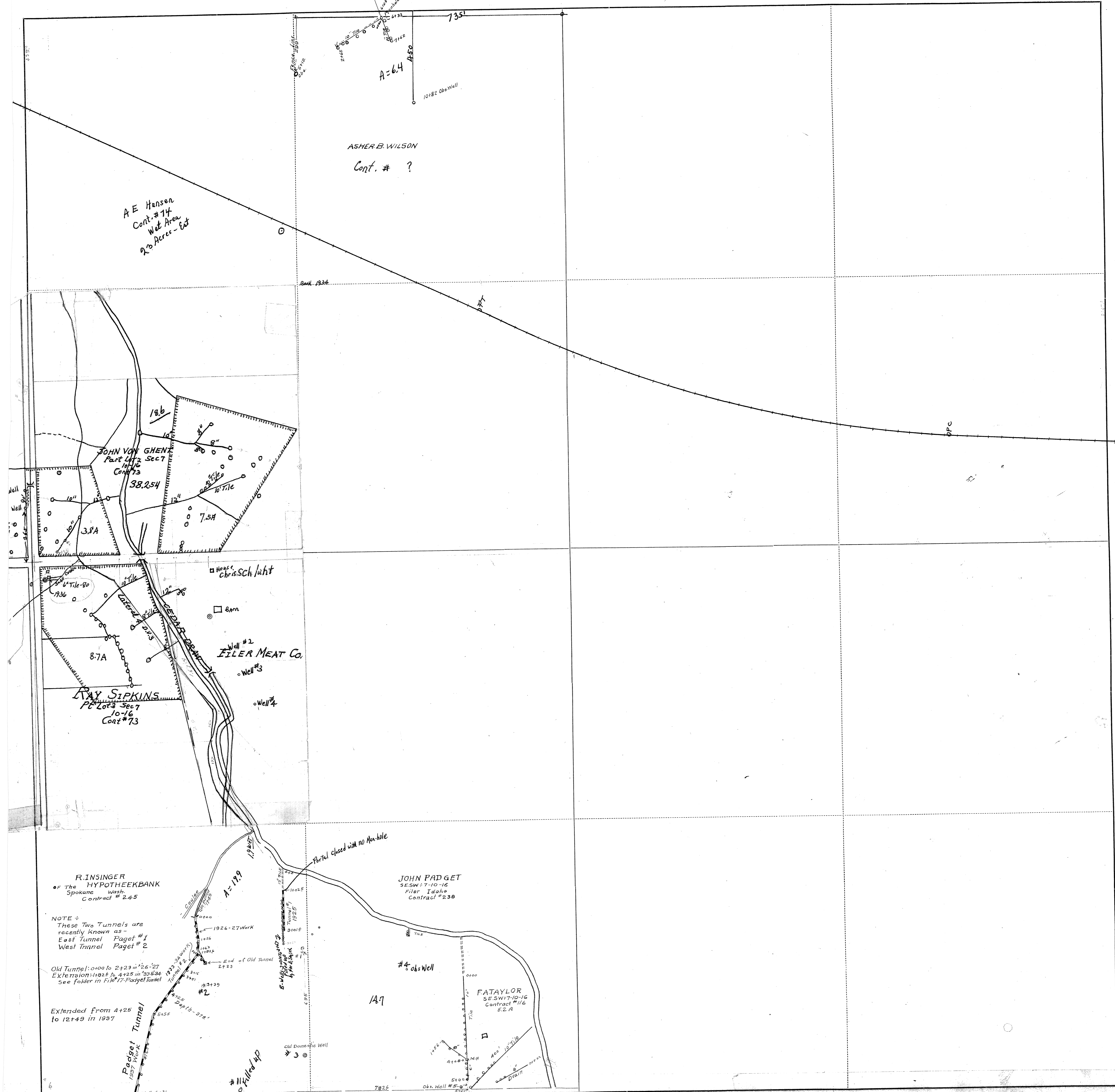
#3  
#4  
#5  
#6  
#7  
#8  
#9  
#10  
#11  
#12

Filled with Mud

Hall  
House Moved away #5  
Casing 3762.0  
Well Water-3752.0

H.W. Ramsay - Williams  
Cont #354  
Affected Area 100A

Domestic Well



A E Hansen  
Cont. # 14  
Wet Area  
2 1/2 Acres - Est

ASHER B. WILSON  
Cont. # ?

JOHN VON GHENT  
Part Lot 2 Sect 7  
10-16  
Cont # 73  
38.254

WEL #2  
FILER MEAT CO.  
Well #3

L. W. SIKKINS  
Part Lot 3 Sect 7  
10-16  
Cont # 73  
8.7A

R. INSINGER  
of The HYPOTHEEKBANK  
Spokane Wash.  
Contract # 245

NOTE :  
These Two Tunnels are  
recently known as  
East Tunnel Paget #1  
West Tunnel Paget #2

Old Tunnel: 0+00 to 2+23 w/ 26'-27'  
Extension: 1926 to 4+25 w/ 33'-34'  
See folder in File # 17, Paget Tunnel

Extended from 4+25  
to 12+49 in 1937

JOHN PADGET  
SESW 7-10-16  
Filer, Idaho  
Contract # 238

FATAYLOR  
SESW 7-10-16  
Contract # 116  
S. 2 A

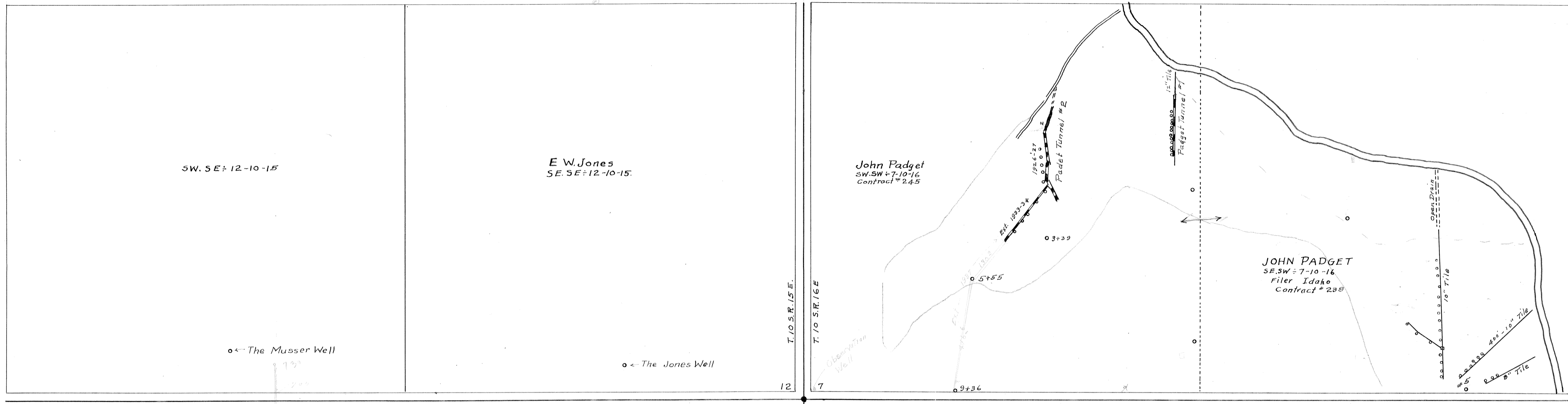
Paget Tunnel  
1937 Work

#11 Milled 4P

Partial closed with no Man-hole



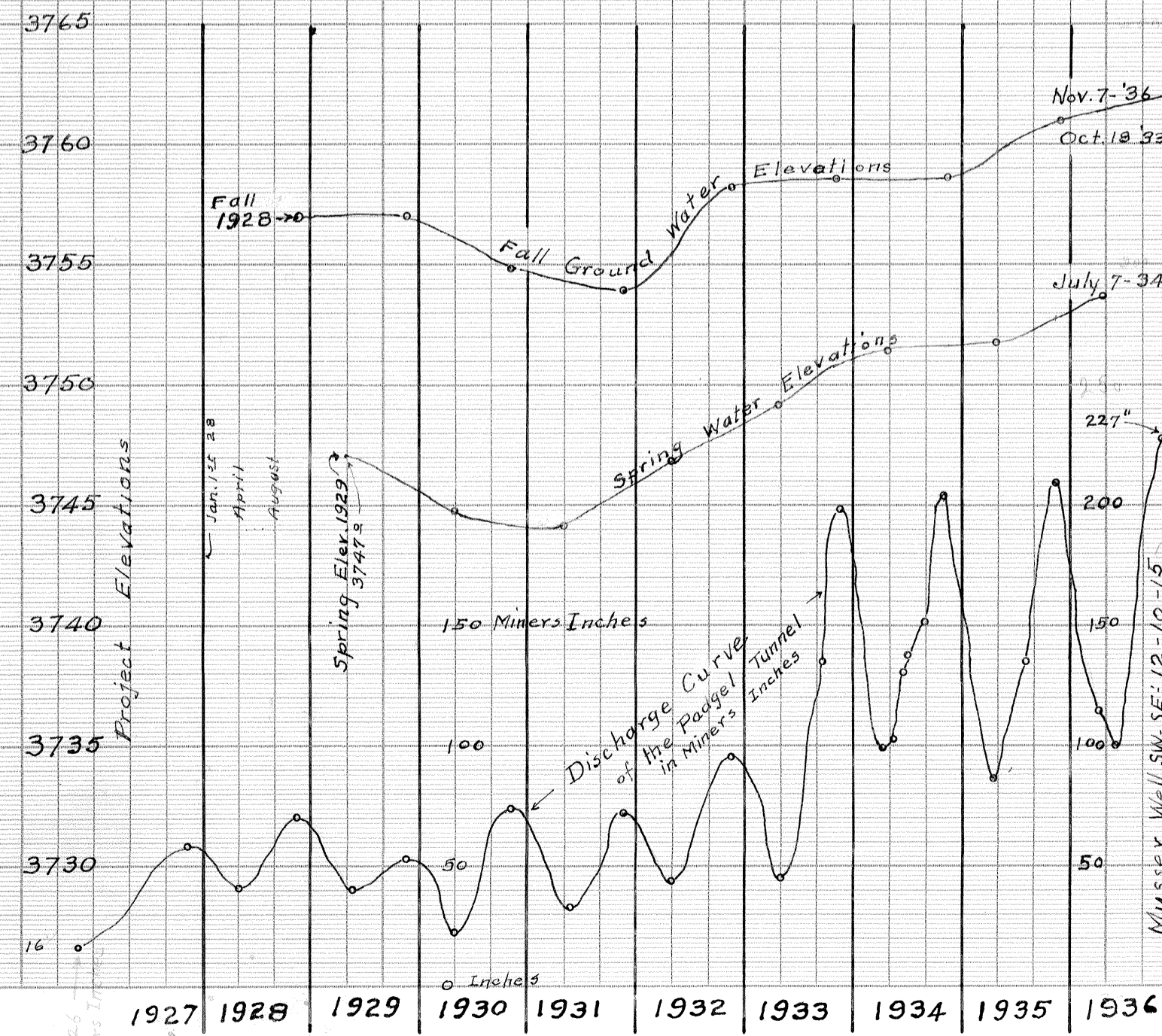
Mrs. L.V. Erhardt  
NE. SE 12-10-15



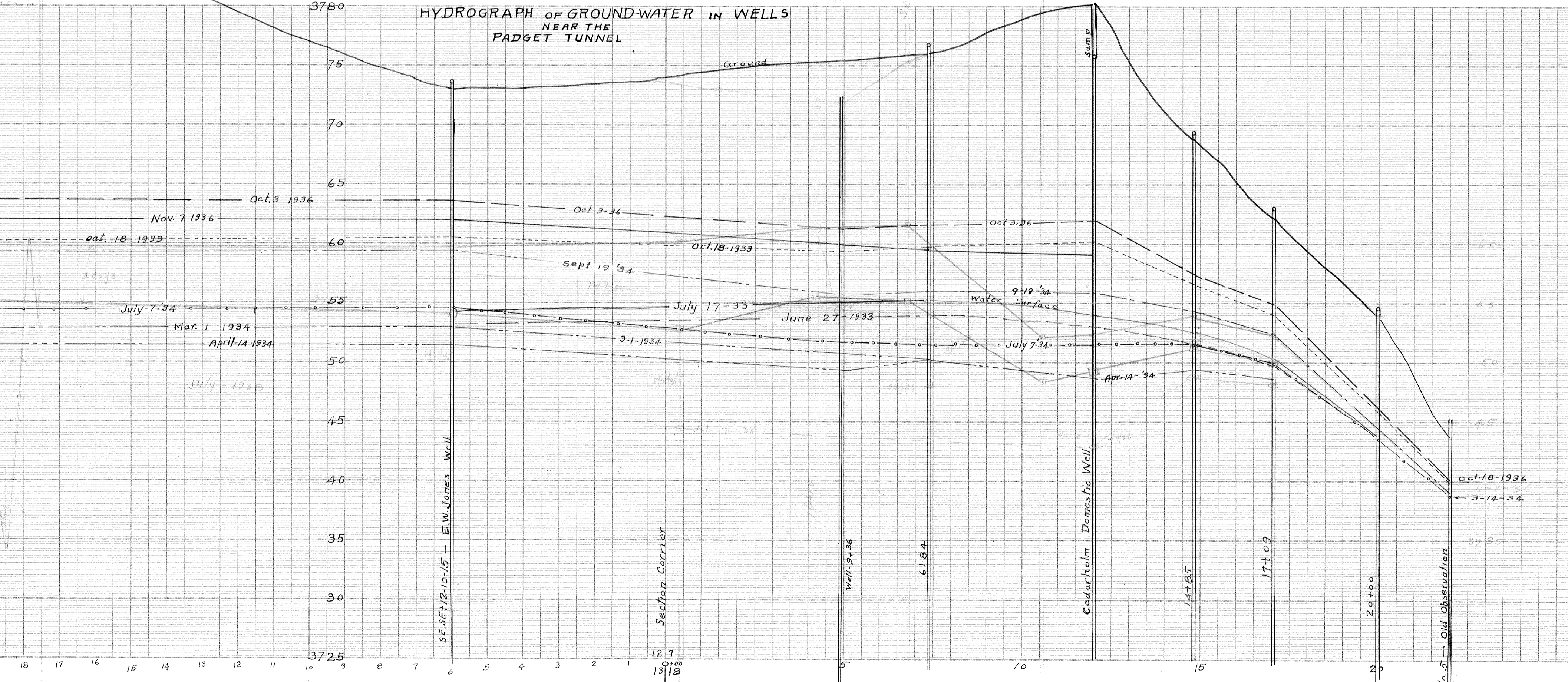
7-10-16

HYDROGRAPH OF THE MUSSER WELL

Showing Ground Water Elevations - Spring and Fall  
For Years 1928 To 1936

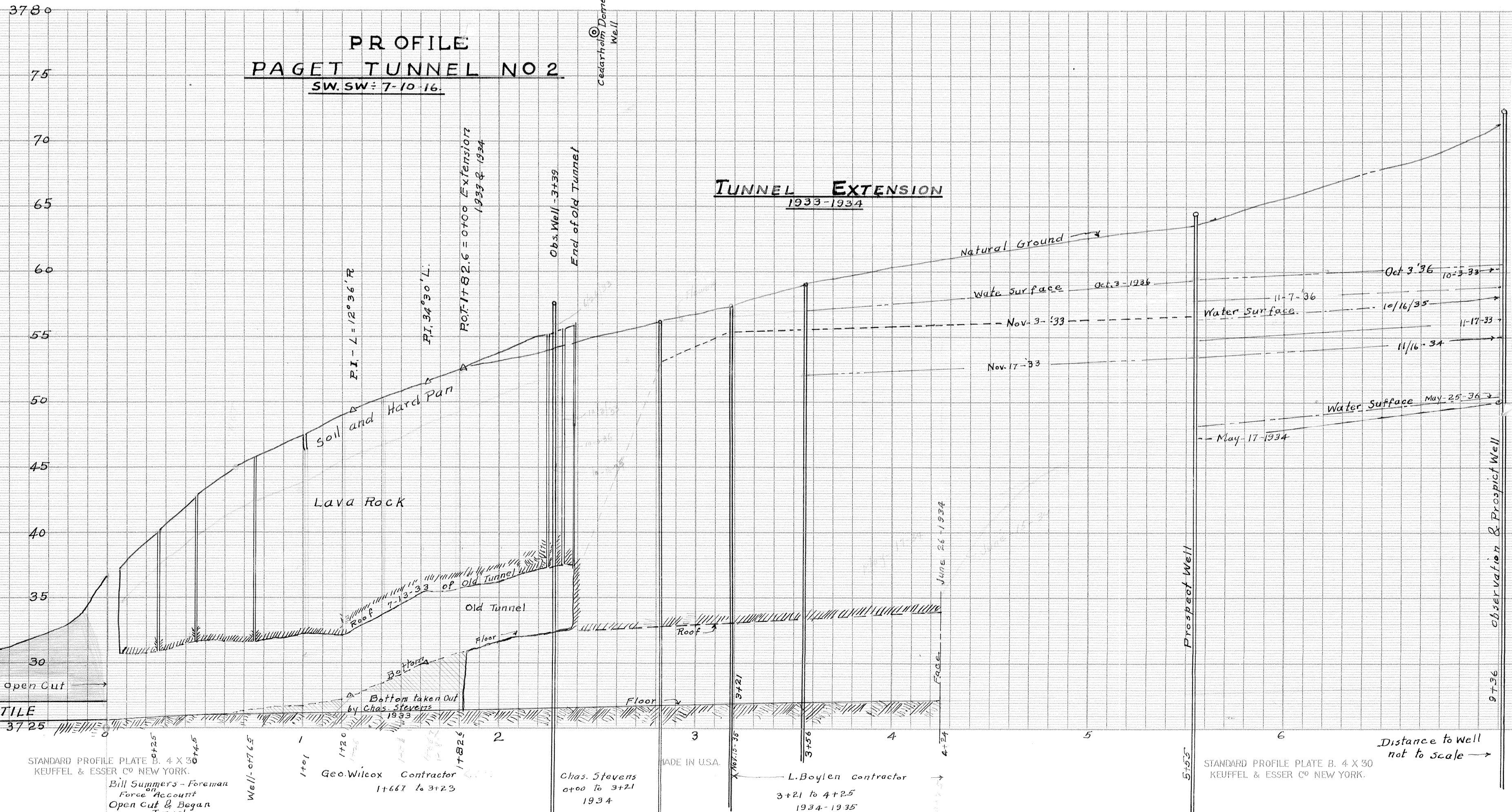
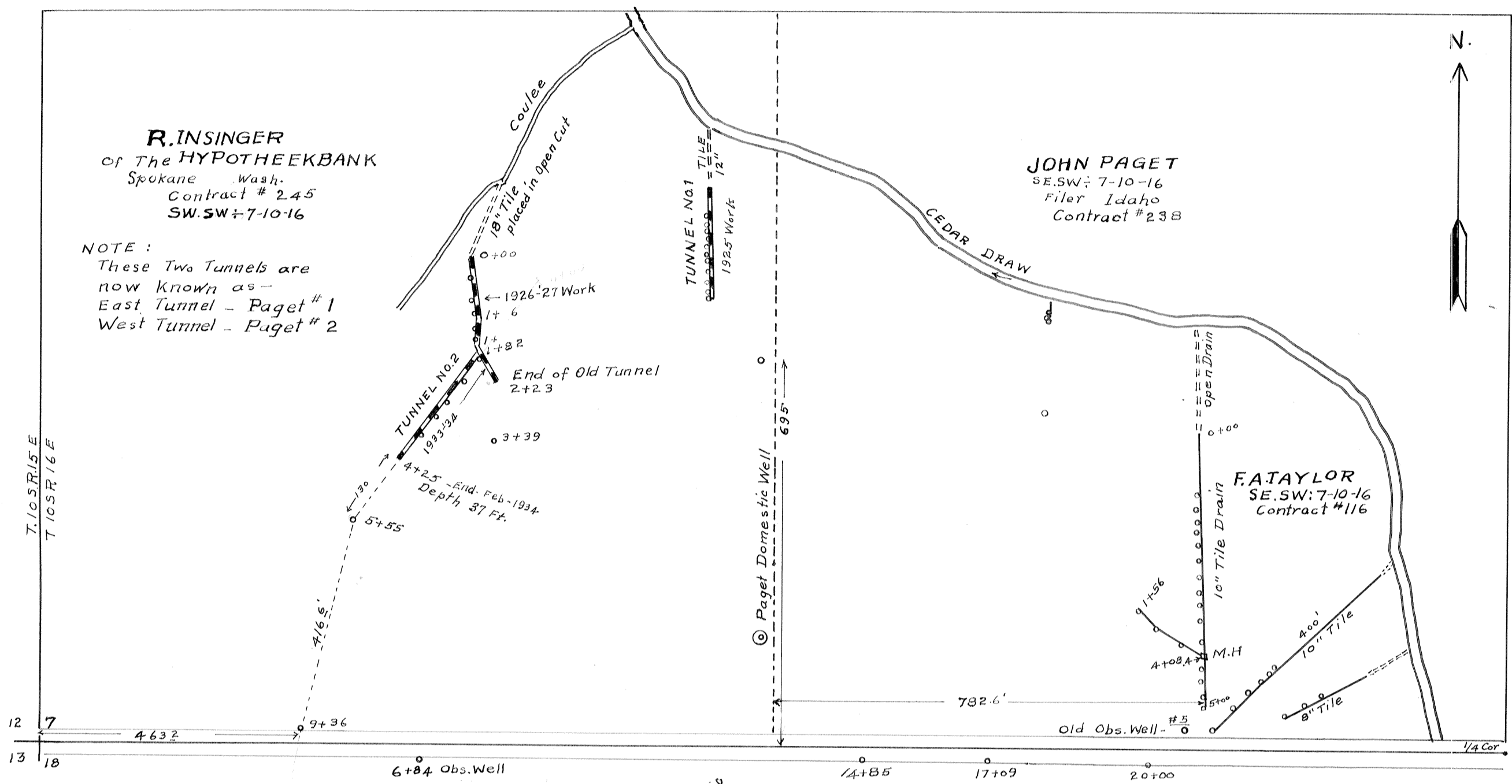


HYDROGRAPH OF GROUND-WATER IN WELLS  
NEAR THE  
PADGET TUNNEL





File 19-36





MADE IN U.S.A.

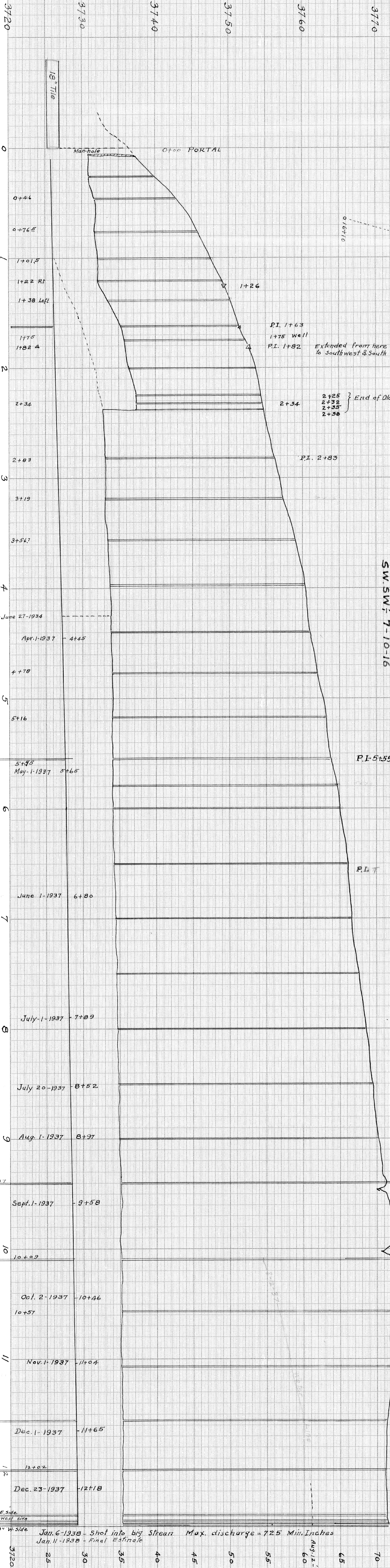
STANDARD PROFILE PLATE B, 4 X 30  
KEUFFEL & ESSER CO. NEW YORK.

MADE IN U.S.A.

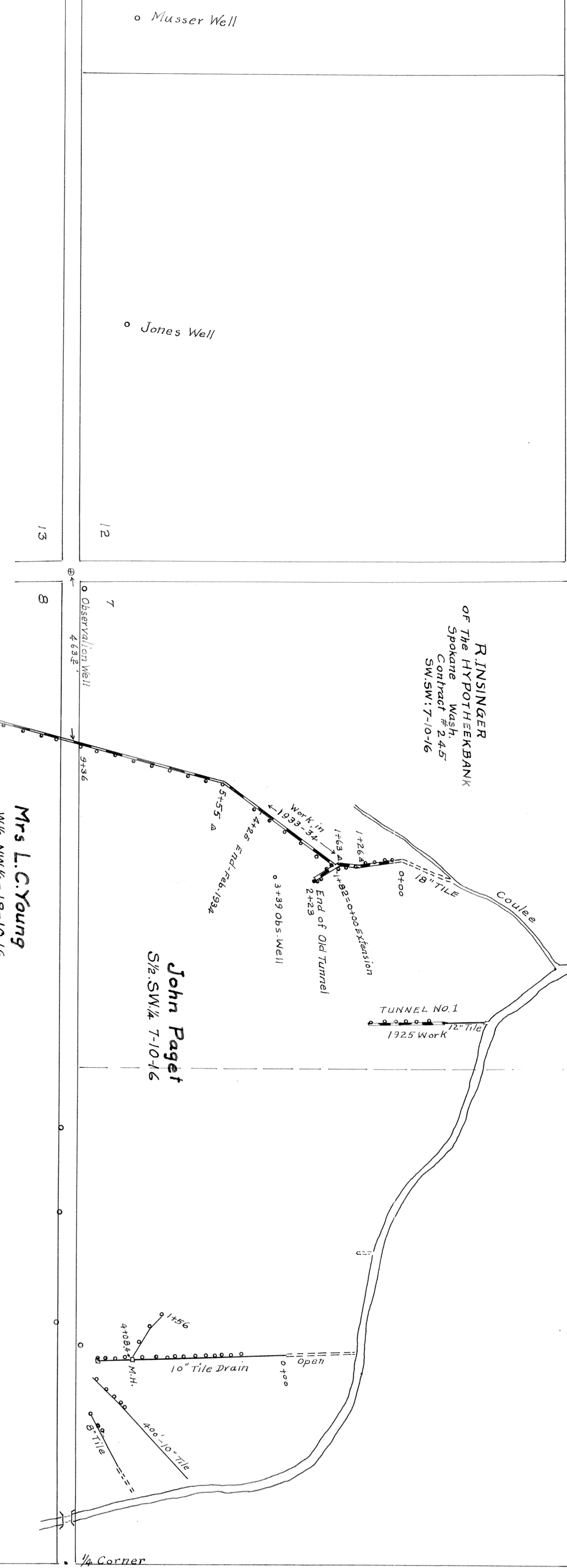
STANDARD PROFILE PLATE B, 4 X 30  
KEUFFEL & ESSER CO. NEW YORK.

MADE IN U.S.A.

MADE IN U.S.A.



**PROFILE - PADGETT TUNNEL**  
S.W. SW 1/4 7-10-16



R. INSINGER  
OF THE HYDRAEUBANK  
Spokane Wash.  
Contract # 245  
SW. SW. 1/4 7-10-16

John Paget  
S 1/2 SW 1/4 7-10-16

Mrs. L. C. Young  
1/2 NW 1/4 18-10-16

7-10-16

Jan. 6-1938 - Shot into big Stream Max. discharge = 72.5 Min. Inches  
 Jan. 11-1938 - Final Estimate

9' 12+03 E Side  
 8' 12+00 West Side

12+51-8" W Side

3720 25 30 35 40 45 50 55 60 65 70 3775