

Spiker Drainage Tunnel

Legal Description:
SW1/4SE1/4

Section 7
Township 9 South
Range 15 East

Legend

- Man Holes
- Observation Wells
- Tunnel Portals
- Vertical Shafts
- Wells
- Drains
- Tunnels
- City Limits
- Canals
- Roads
- Section Line
- Parcels



This map is for informational and reference purposes only and may not have been prepared for, or be suitable for legal, engineering, or surveying purposes. Users of this information should review or consult the primary data, and information sources to ascertain the usability of information.

SPIKER TUNNEL

Geo. Hobson
Contract 303
CECIL LYONS

F.R. Smith
56

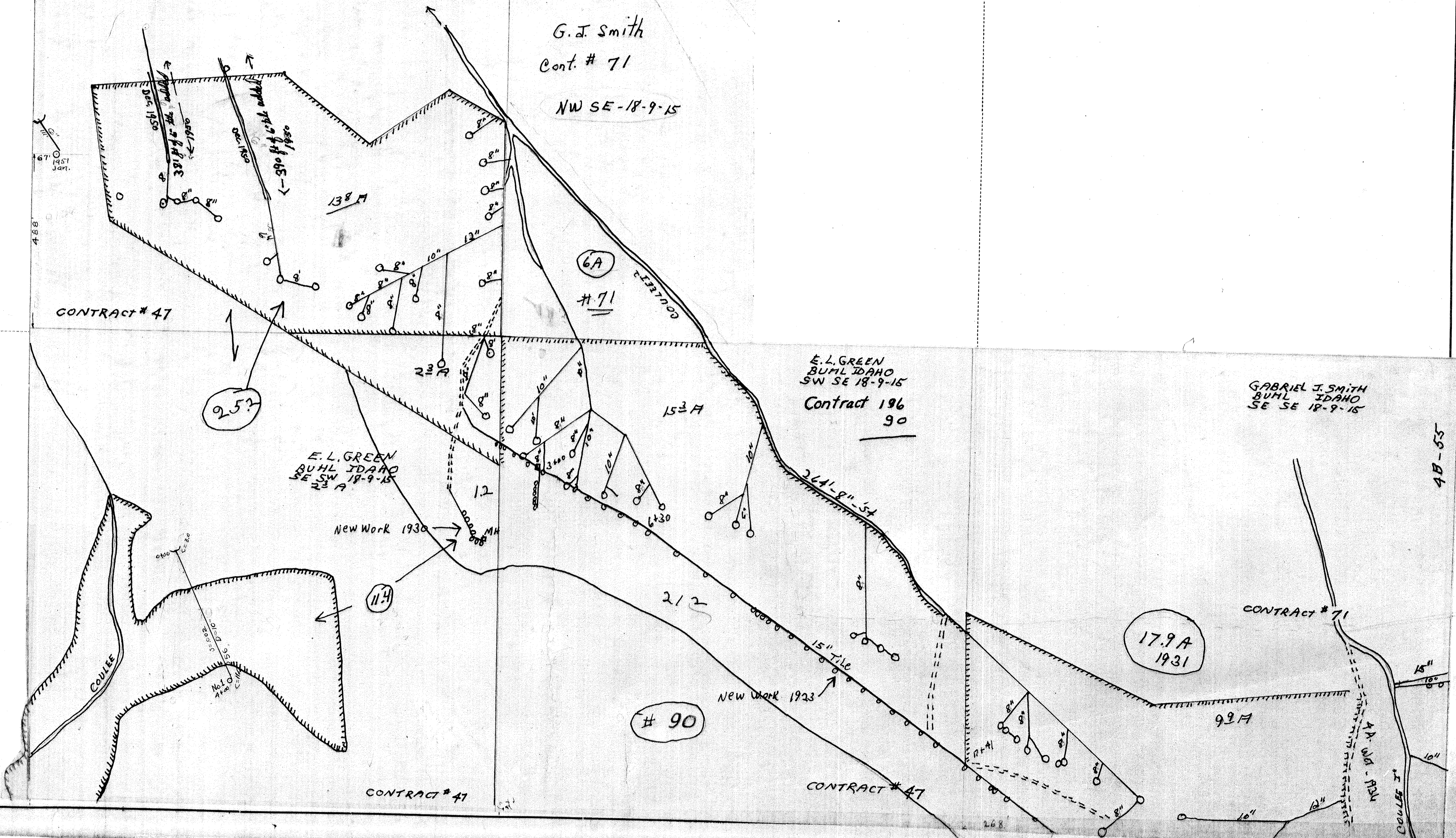
E.L. GREEN
BUHL IDAHO
NE. SW. 18-9-15

G.I. Smith
Cont. # 71
NW SE-18-9-15

E.L. GREEN
BUHL IDAHO
SW SE 18-9-15
Contract 196
90

GABRIEL J. SMITH
BUHL IDAHO
SE SE 18-9-15

Frank Schoeler
311



Chas Glenn

C.E. Leeper
Contract - 316

C.E. Leeper
Contract #316

112
72
184

T. SWASSOM
WIN FALLS
CONTRACT # 85
1905-1909

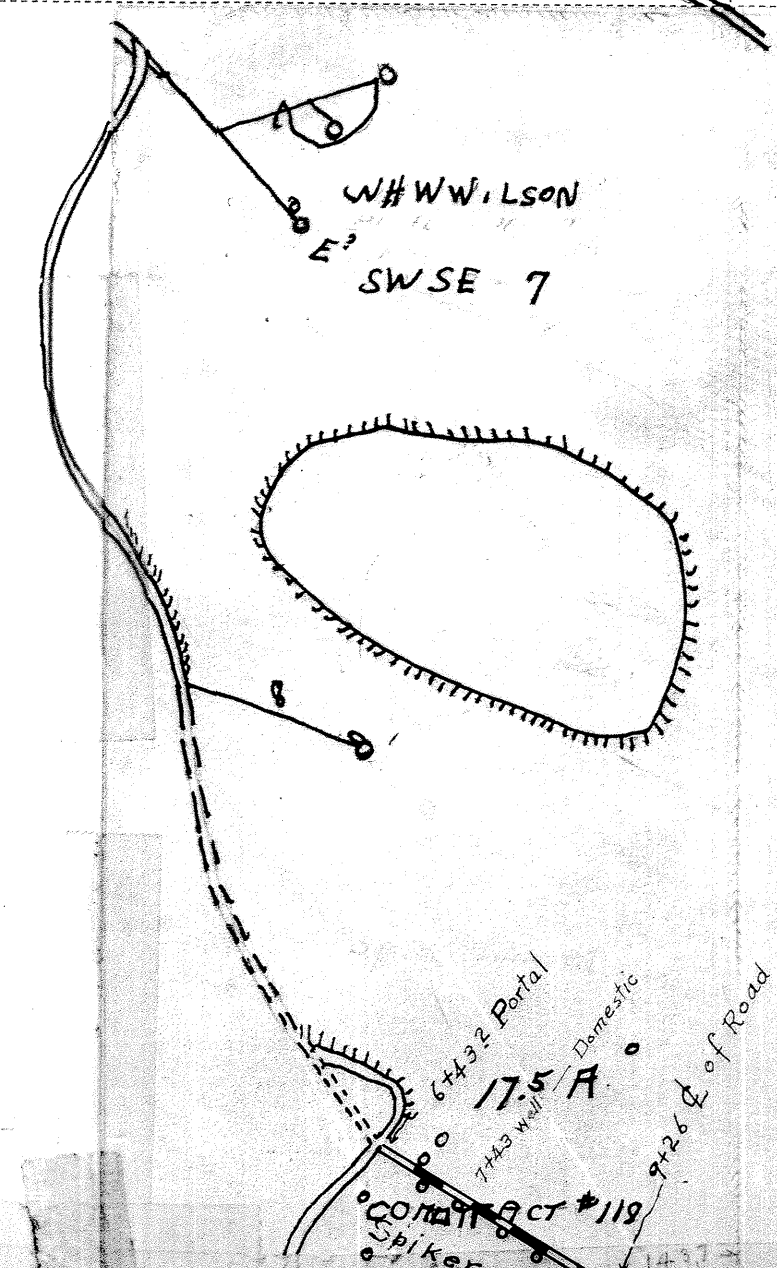
H.J. Weaver
1905-1909

LEGEND
O Well
= Tile Drain
--- 500' Elevation
Scale 1" = 200'

William K. Miller

213' 8" tile
Wells drilled
1957

3.7 Affected
3.7' Manhole Flume

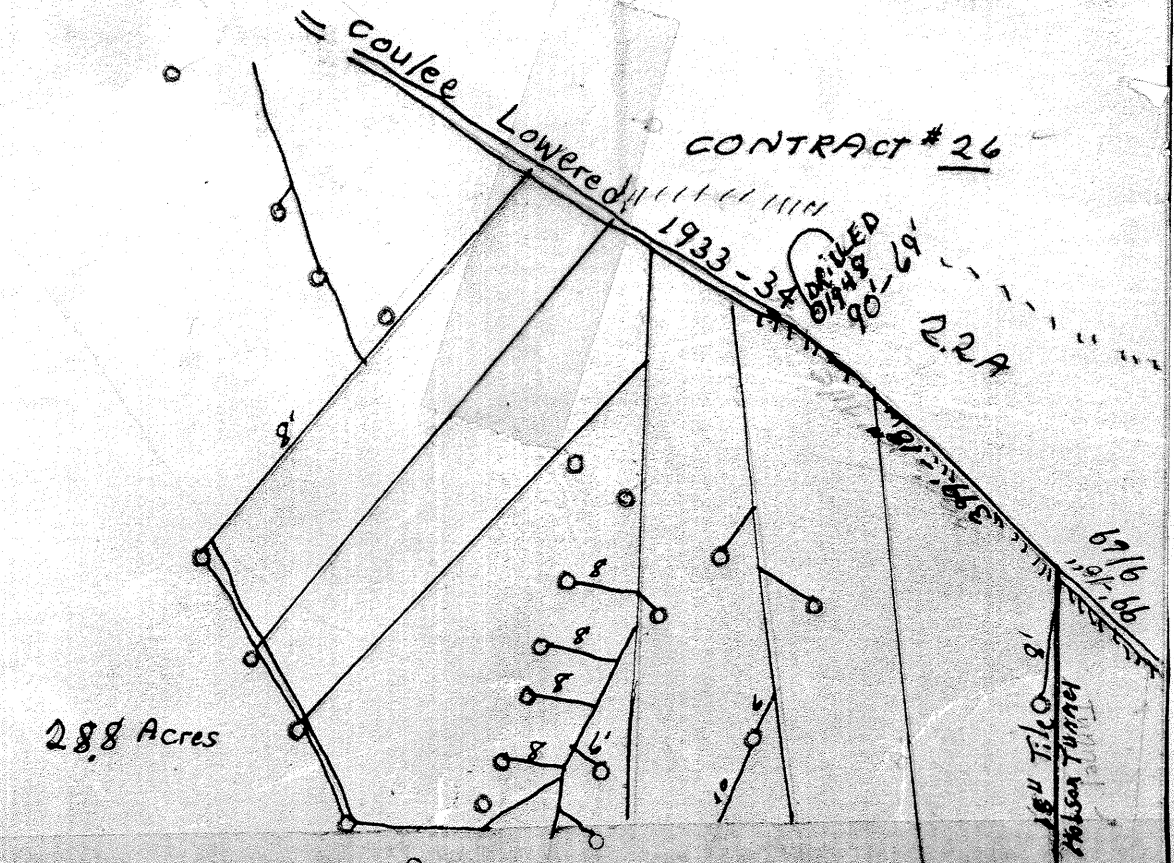


Hutchinson

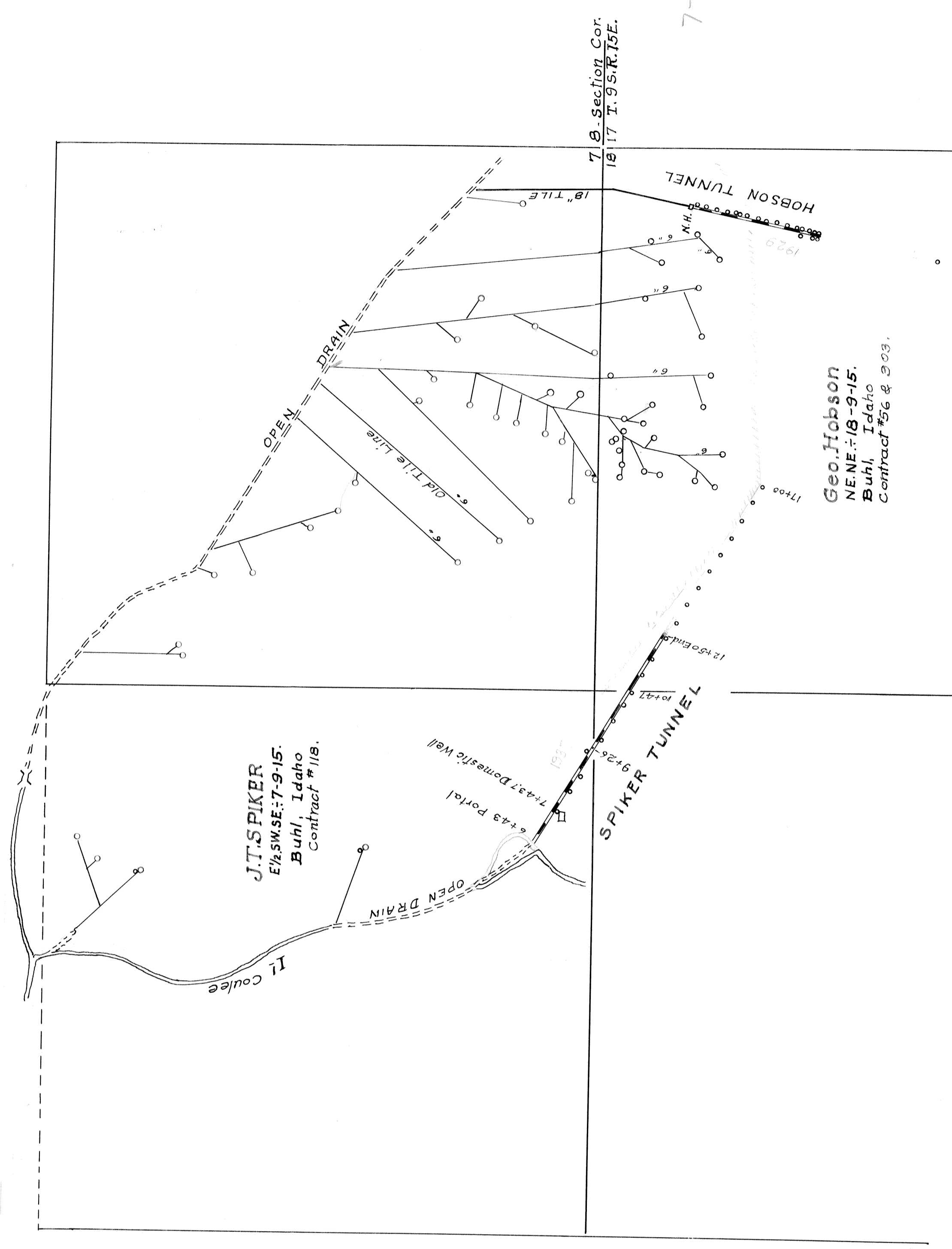
SMITH CARE
BURL IDAHO
SE SE 7-9-15

288
312
312

CONTRACT # 26

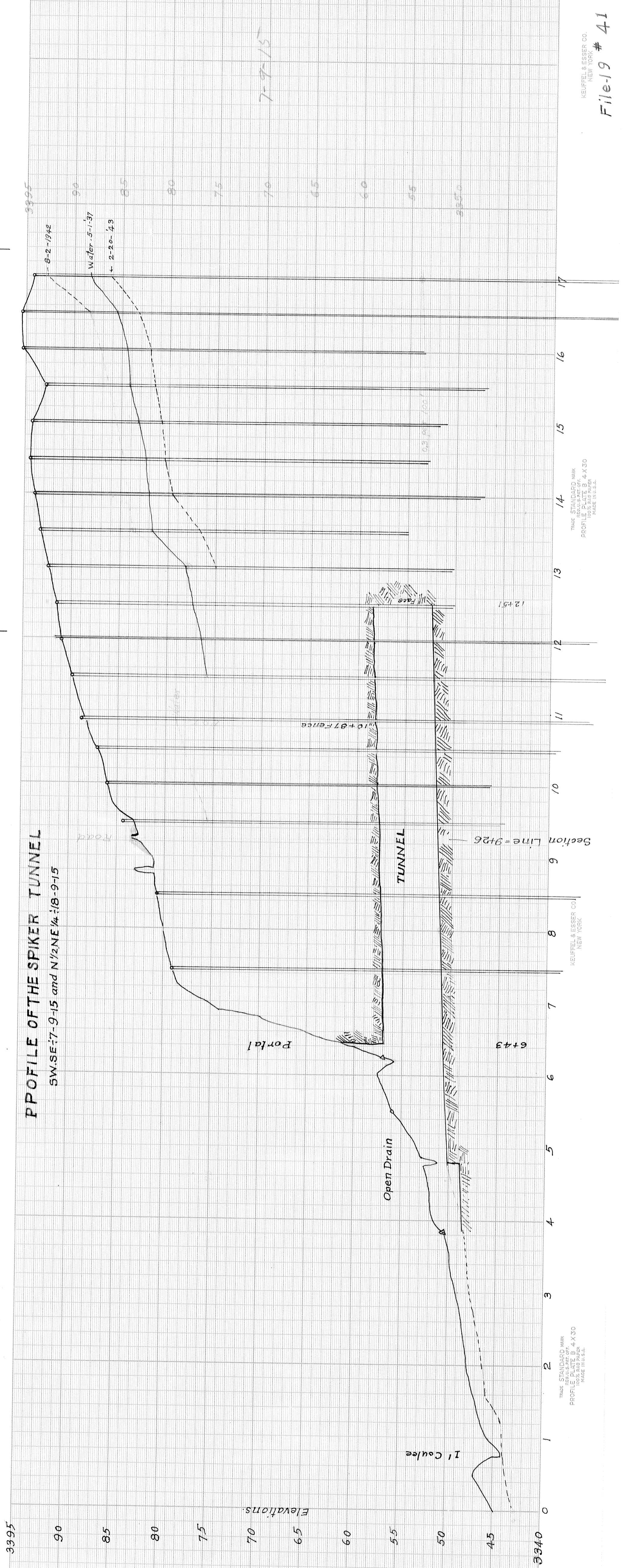


Spiker Tunnel



PROFILE OF THE SPIKER TUNNEL

SW 1/4 Sec 7-9-15 and N 1/2 NE 1/4 Sec 18-9-15



TRADE STANDARD MARK
PROFILE PLATE B 4 X 30
MADE IN U.S.A.

KEUFFEL & ESSER CO.
NEW YORK

TRADE STANDARD MARK
PROFILE PLATE S 4 X 30
MADE IN U.S.A.

KEUFFEL & ESSER CO.
NEW YORK

File-19 # 41

28 Tunnel 18-41

18-41

7-9-15

7-9-15